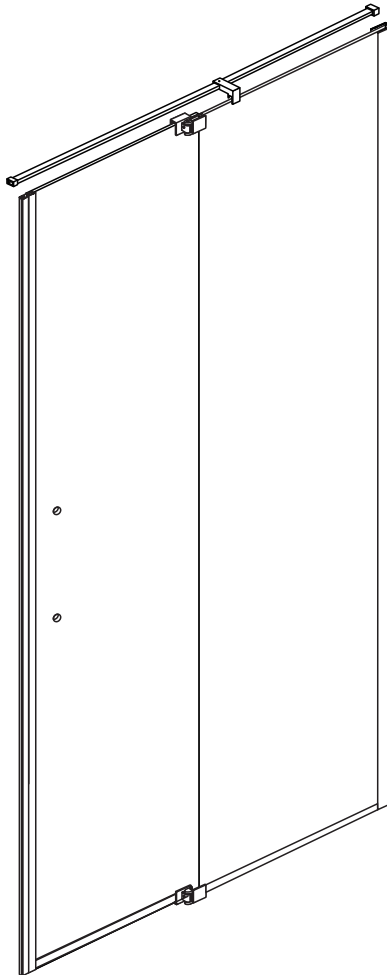


# MEGAN SHOWER DOOR

## Installation Instructions



### **GD-ME5979C**

Size: 59" – 79" EN (GD-ME5979C)

## ◆ General Information

Please inspect the product immediately upon receipt for transit damage, missing packs/parts or manufacturing fault. Damage reported later cannot be accepted. Please handle the product with care avoiding knocks and shock loading to all sides and edges of the glass.

### **Notes: Safety glass can not be re-worked.**

Please read these instructions carefully before start of installation.

Special care should be taken when drilling walls to avoid hidden pipes or electrical cables.

Note: This product is heavy and may require two people to install.

## **Aftercare instructions**

After use, your shower should be cleaned with soap and water. This is particularly important in hard water districts where insoluble lime salts may be deposited and allowed to build up.

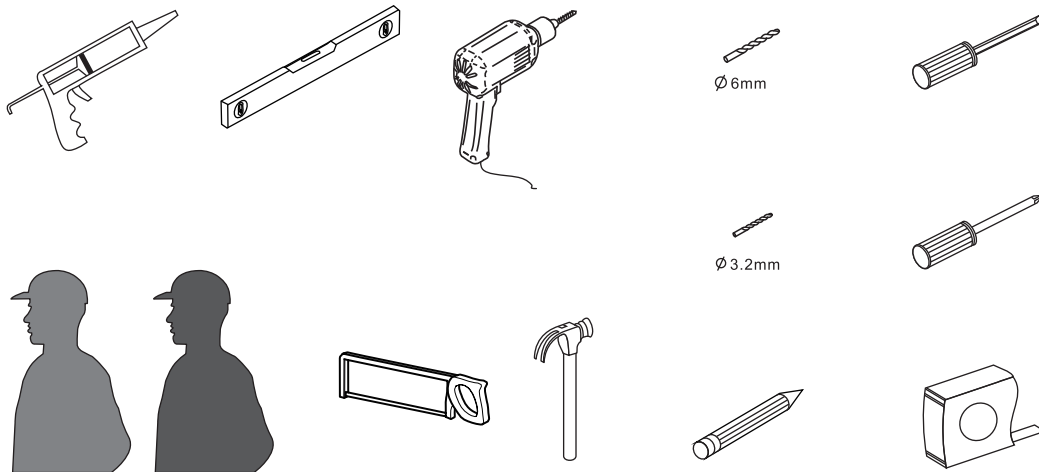
Cleaners of a gritty or abrasive nature should not be used. Care should be taken to avoid contact with strong chemicals such as organic solvents and strippers.

Glass cleaners can be used but with caution, if in doubt contact the manufacturer of the cleaner in question.

Please keep these instructions for aftercare and customer service details.

---

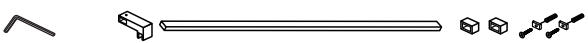


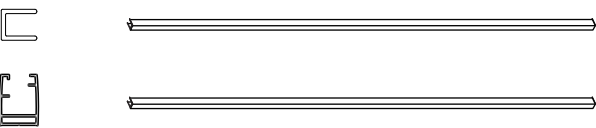
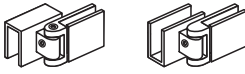
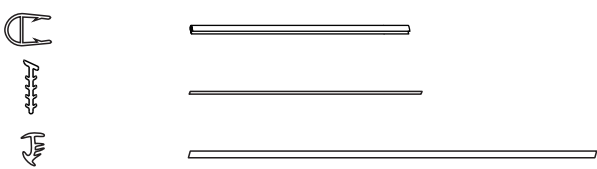
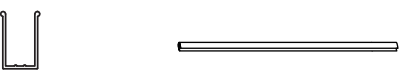
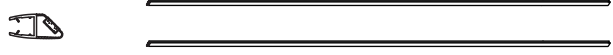
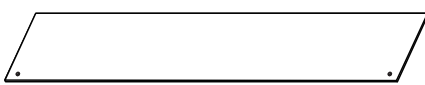
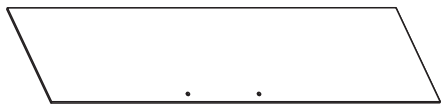
## **Tools Required**



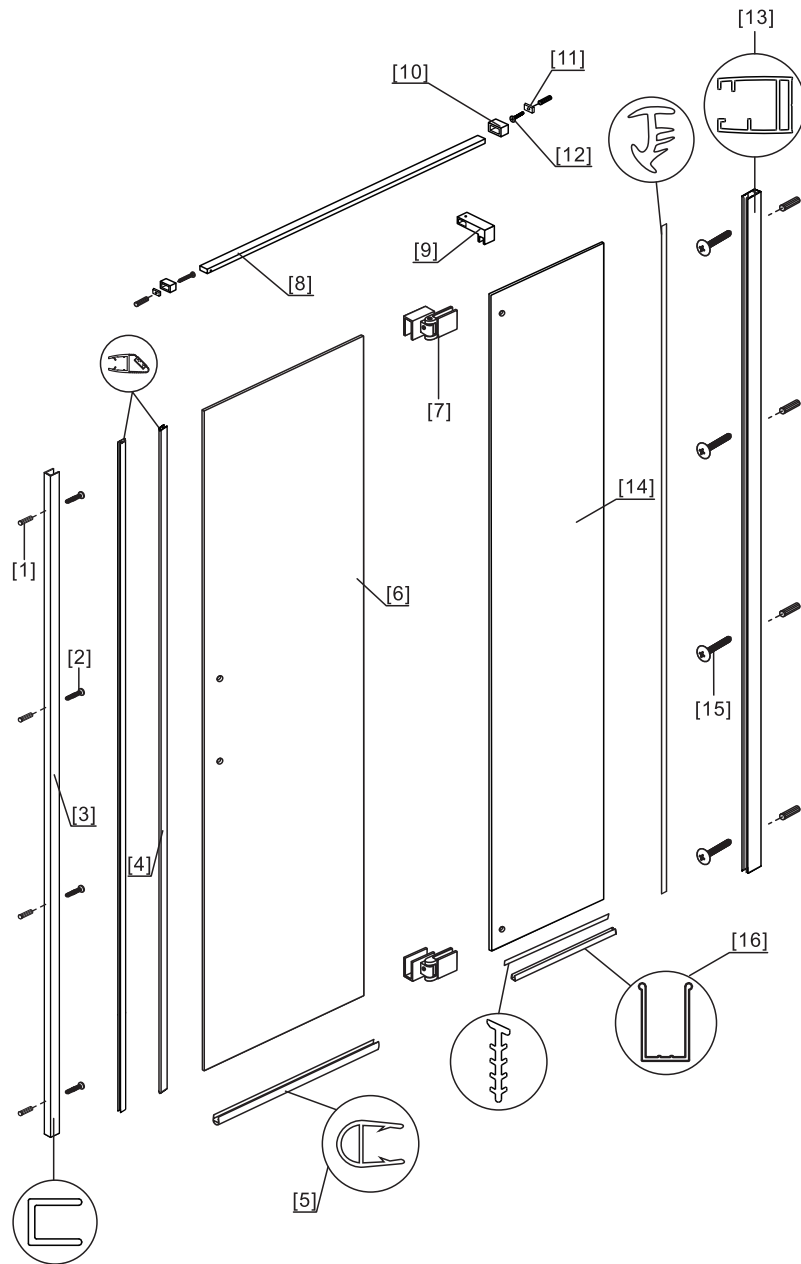
**This product is heavy and may require two people to install.**



## ◆Box Contents

<p>[1] 1xBrackets. 1xBar Fasteners. 2xWall Connect Clips 2xWall Fixings. 2xWall Plug. 2xScrew M4x35 .</p>	→	
<p>[2] 1xInstallation Instruction.</p>	→	
<p>[3] 8xWall Plugs. 4xScrews M4x30. 4xScrews M3.5x25.</p>	→	
<p>[4] 2xWall Posts.</p>	→	
<p>[5] 2xHinges .</p>	→	
<p>[6] 3xWater Deflectors.</p>	→	
<p>[7] 1xWater Deflector.</p>	→	
<p>[8] 2xMagnetic Seals.</p>	→	
<p>[9] 1xFixed Panels.</p>	→	
<p>[10] 1xDoor Panel.</p>	→	

## ◆ Assembly Drawing

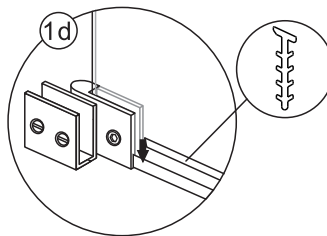
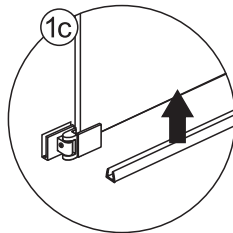
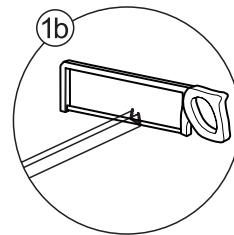
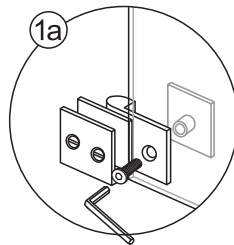
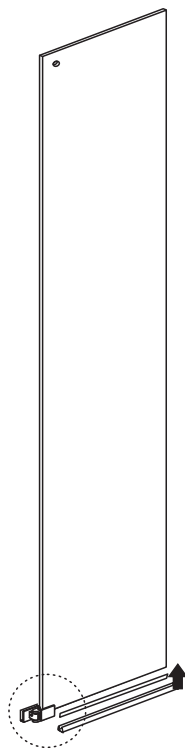


- [1] 10xWall Plugs
- [2] 4xScrews M3.5x25
- [3] 1xWall Post
- [4] 2xMagnetic Seals
- [5] 3xWater Deflectors
- [6] 1xDoor Panel
- [7] 2xHinges
- [8] 1xBracket

- [9] 1xBar Fastener
- [10] 2xWall Clip Fixing
- [11] 2xWall Fixing
- [12] 2xScrews M4x35
- [13] 1xWall Post
- [14] 1xFixed Panel
- [15] 4xScrews M4x30
- [16] 1xWater Deflector

# ◆ Installation Steps

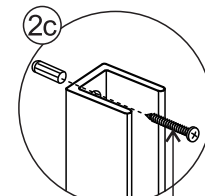
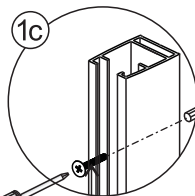
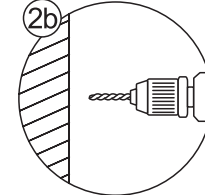
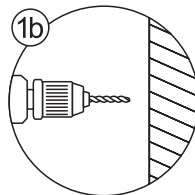
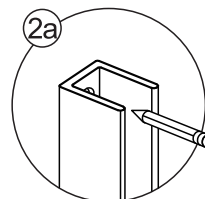
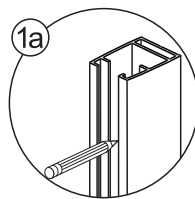
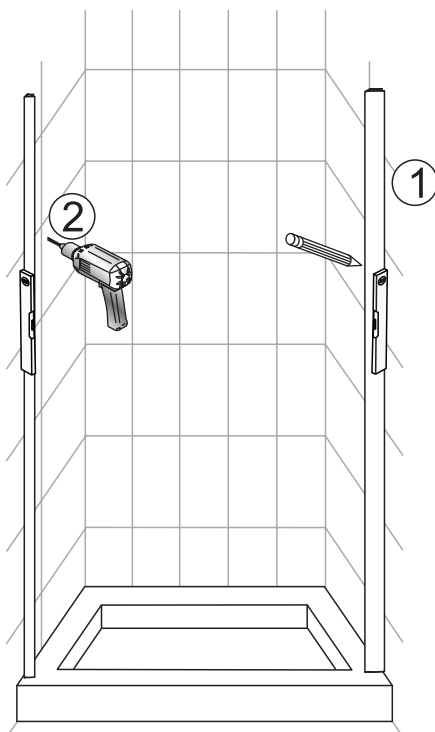
## Step 1



Vertical profile can be adjusted 10mm ,When the glass is fully inserted into the vertical profile ,bottom U channel need to be cut 10mm, when the glass isn't fully inserted into the vertical profile , bottom U channel need to be cut accordingly

View from inside

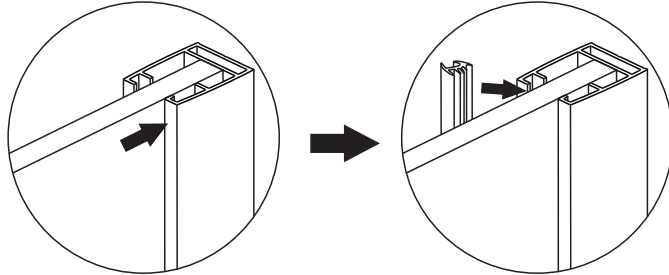
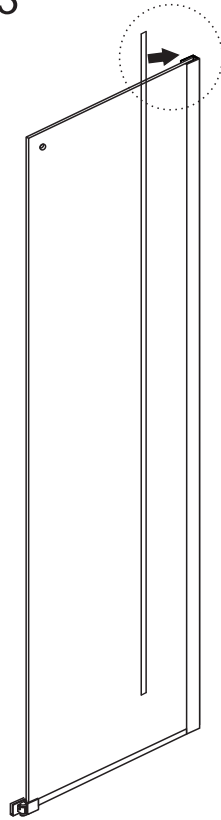
## Step 2



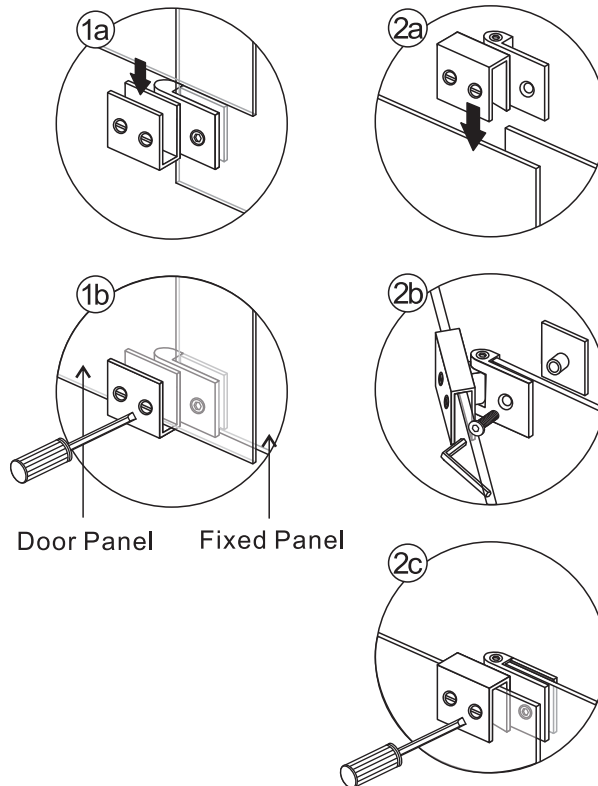
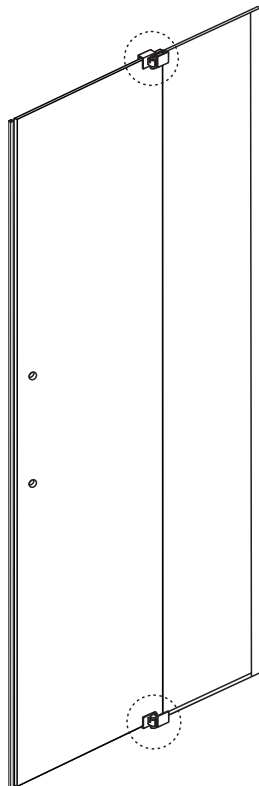
Screw M4x35

Screw M3.5x25

### Step 3



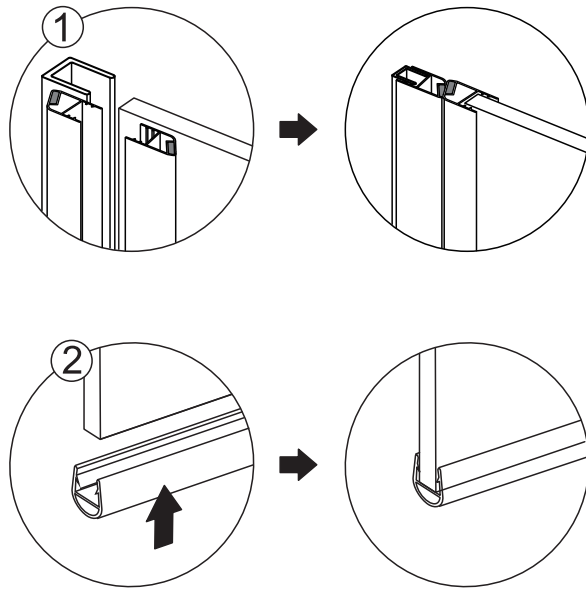
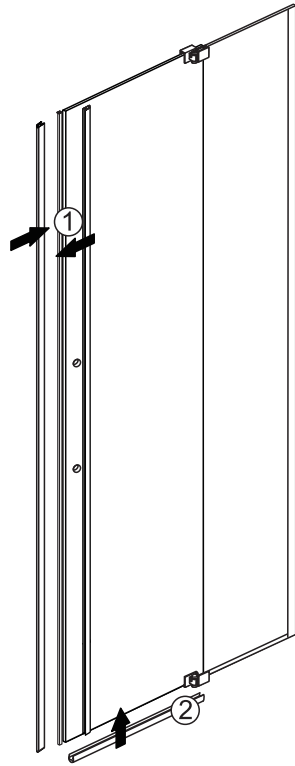
### Step 4



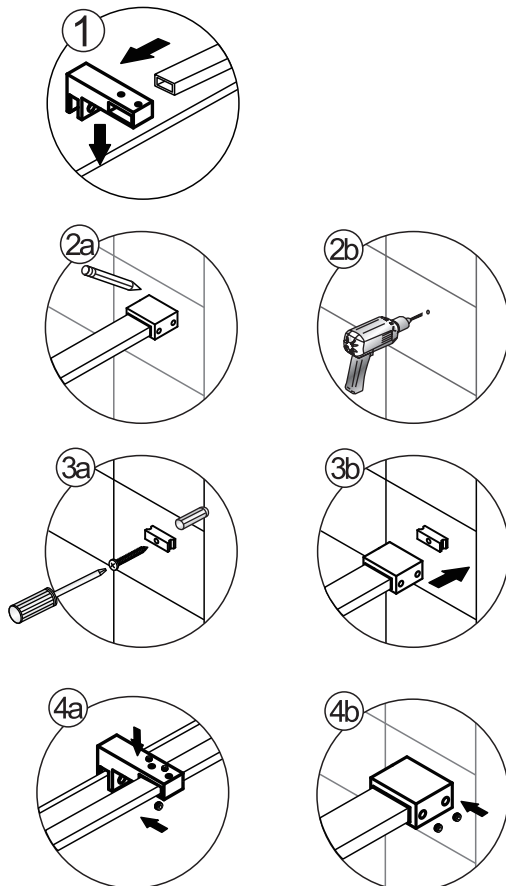
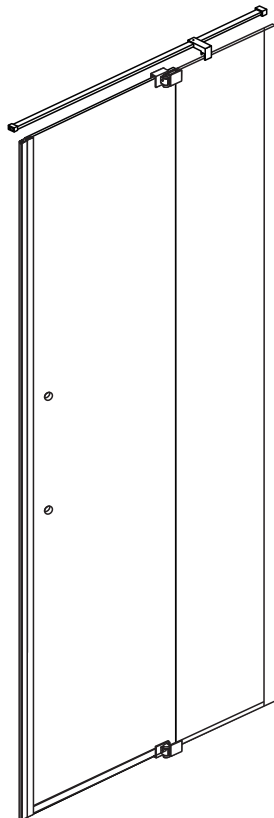
Door Panel Fixed Panel

View from inside

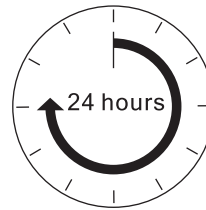
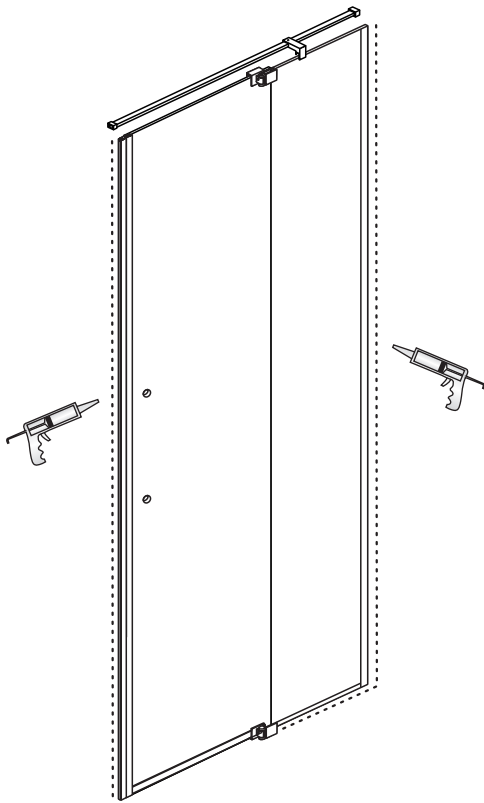
## Step 5



## Step 6



## Step 7



**Allow 24 hours for silicone to dry before use.**



**QUALITY AND SERVICE YOU CAN COUNT ON SINCE 1985**

For over 33 years, Nerval Corporation has been importing, wholesaling and manufacturing a wide variety of products. Wholesale only, we sell to retail stores, hotels, contractors and builders. If you require high quality products at truly affordable prices, contact us

---

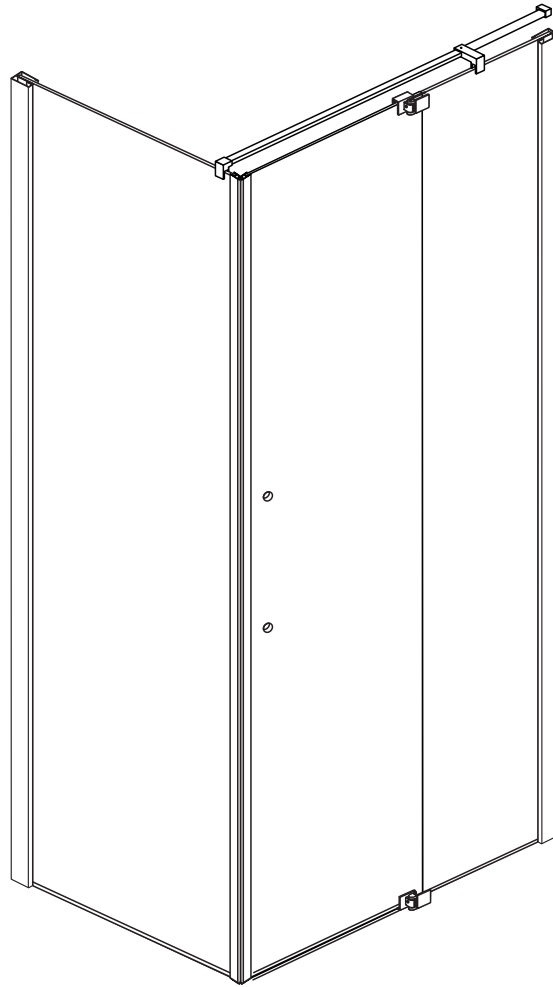
Tel: 780 452 1111 | Email: [info@nervalcorp.com](mailto:info@nervalcorp.com) | [www.nervalcorp.com](http://www.nervalcorp.com)

NERVAL is a registered trade mark of NERVAL Corporation

Copyright © 2018

# MEGAN SHOWER DOOR WITH RETURNS

## Installation Instructions



## GD-MERPKIT

## ◆ General Information

Please inspect the product immediately upon receipt for transit damage, missing packs/parts or manufacturing fault. Damage reported later cannot be accepted. Please handle the product with care avoiding knocks and shock loading to all sides and edges of the glass.

### **Notes: Safety glass can not be re-worked.**

Please read these instructions carefully before start of installation.

Special care should be taken when drilling walls to avoid hidden pipes or electrical cables.

Note: This product is heavy and may require two people to install.

## **Aftercare instructions**

After use, your shower should be cleaned with soap and water. This is particularly important in hard water districts where insoluble lime salts may be deposited and allowed to build up.

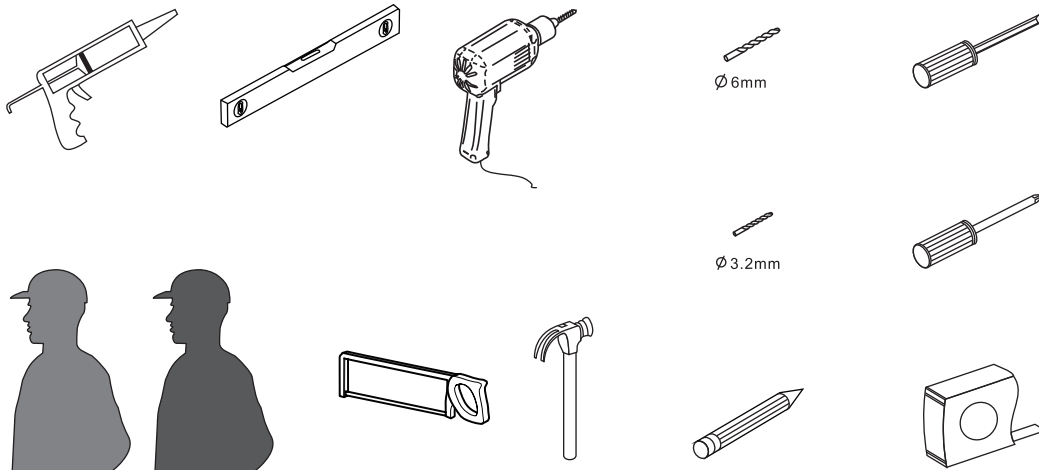
Cleaners of a gritty or abrasive nature should not be used. Care should be taken to avoid contact with strong chemicals such as organic solvents and strippers.

Glass cleaners can be used but with caution, if in doubt contact the manufacturer of the cleaner in question.

Please keep these instructions for aftercare and customer service details.

---

## **Tools Required**



**This product is heavy and may require two people to install.**



## ◆Box Contents

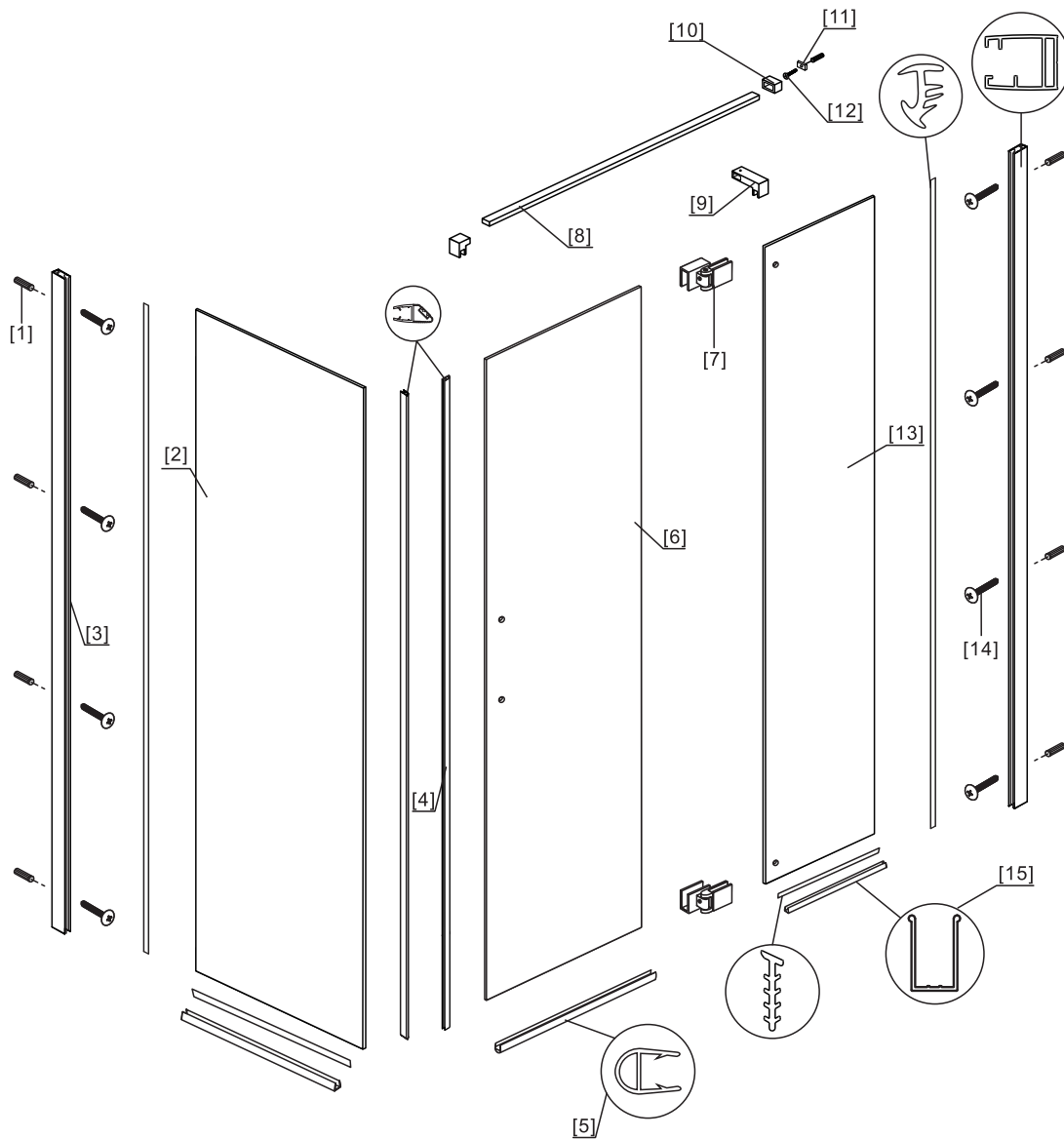
Megan:

[1] 1xBrackets. 1xBar Fasteners. 2xWall Connect Clips 2xWall Fixings. 2xWall Plug. 2xScrew M4x35 .	➔	
[2] 1xInstallation Instruction.	➔	
[3] 8xWall Plugs. 4xScrews M4x30. 4xScrews M3.5x25.	➔	
[4] 2xWall Posts.	➔	
[5] 2xHinges .	➔	
[6] 3xWater Deflectors.	➔	
[7] 1xWater Deflector.	➔	
[8] 2xMagnetic Seals.	➔	
[9] 1xFixed Panels.	➔	
[10] 1xDoor Panel.	➔	

Megan return panel kit:

[1] 2xWall Posts.	➔	
[2] 3xWater Deflectors.	➔	
[3] 1xWater Deflector.	➔	

## ◆ Assembly Drawing

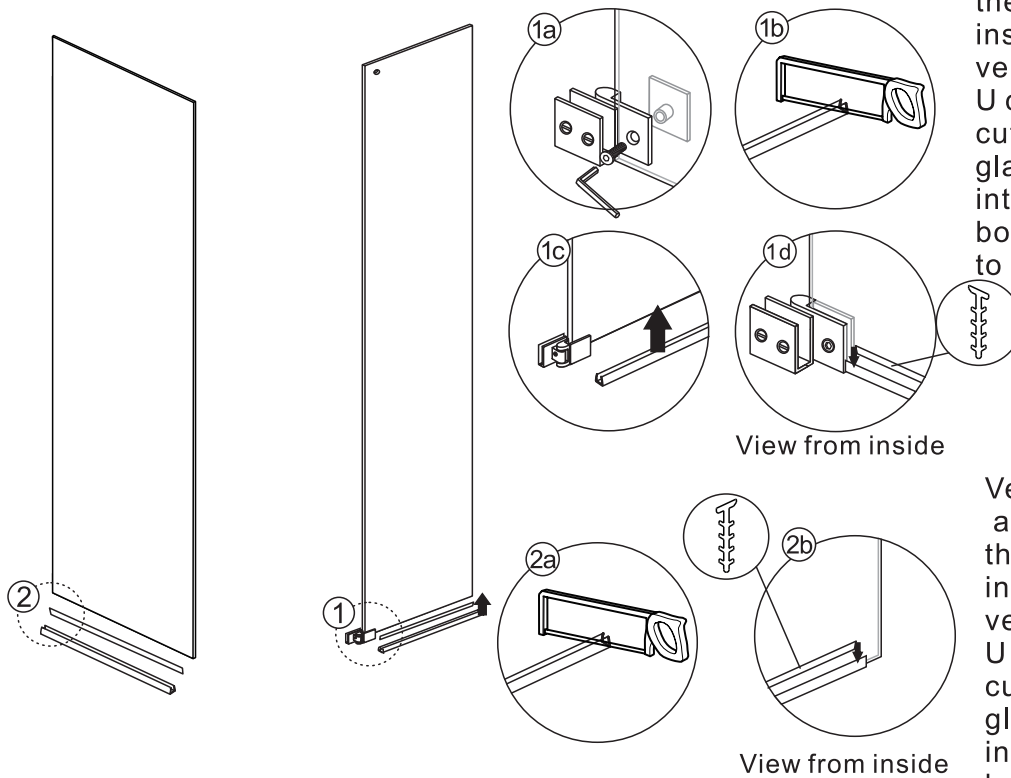


- [1] 9xWall Plugs
- [2] 1xSide Panel
- [3] 2xWall Posts
- [4] 2xMagnetic Seals
- [5] 5xWater Deflectors
- [6] 1xDoor Panel
- [7] 2xHinges
- [8] 1xBracket

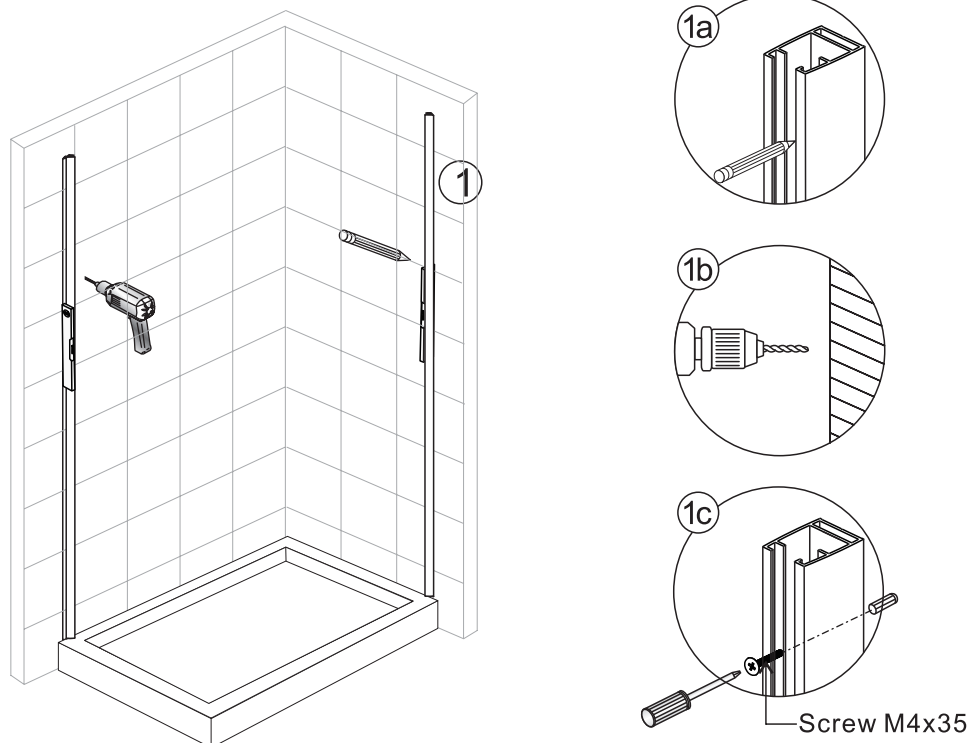
- [9] 2xBar Fasteners
- [10] 1xWall Clip Fixing
- [11] 1xWall Fixing
- [12] 1xScrew M4x35
- [13] 1xFixed Panel
- [14] 8xScrews M4x30
- [15] 2xWater Deflectors

# ◆ Installation Steps

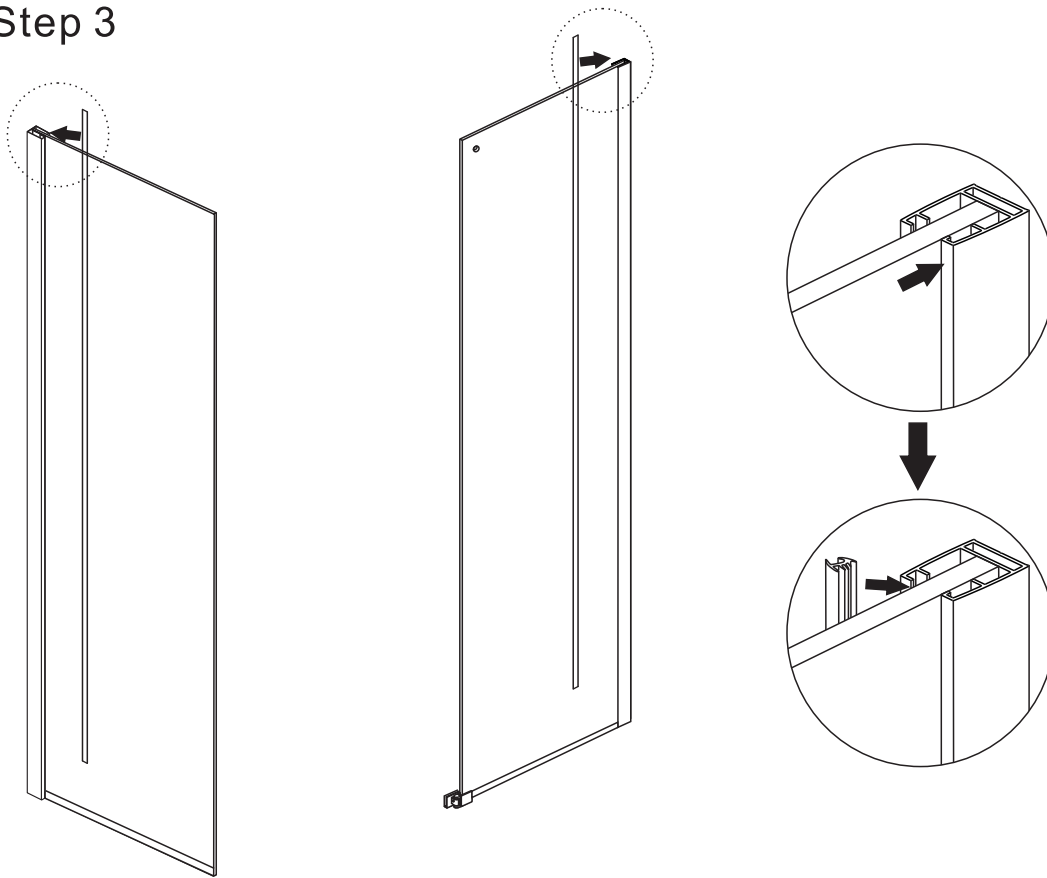
## Step 1



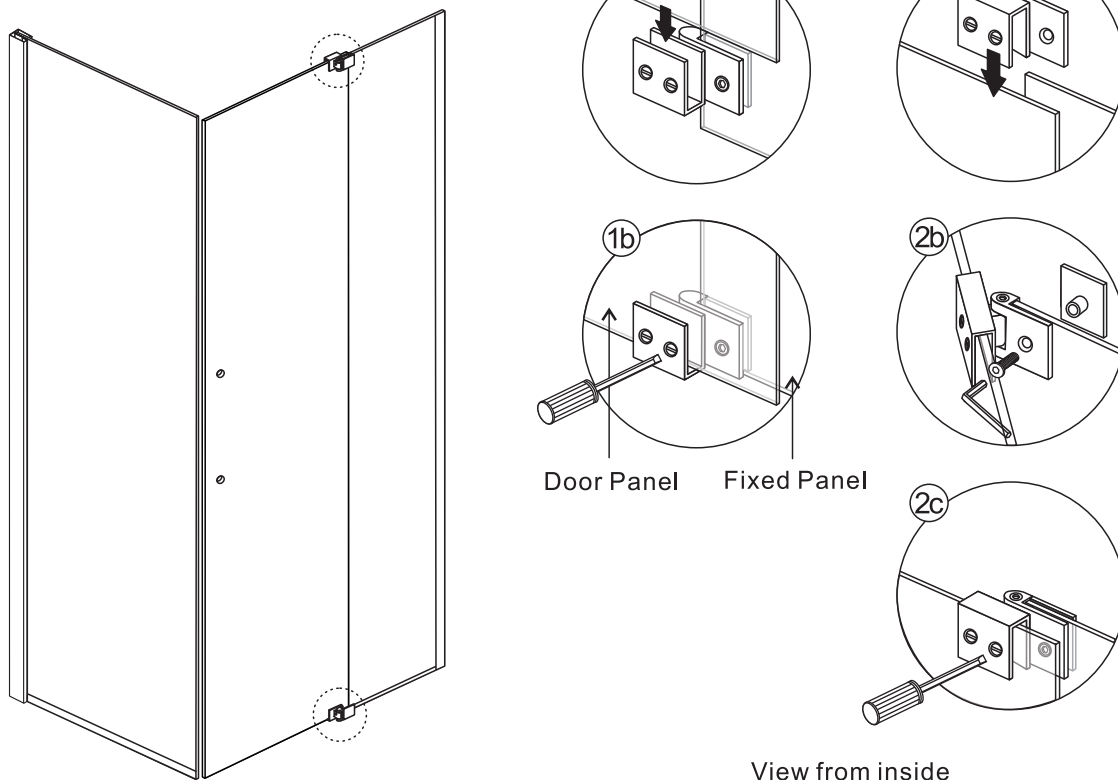
## Step 2



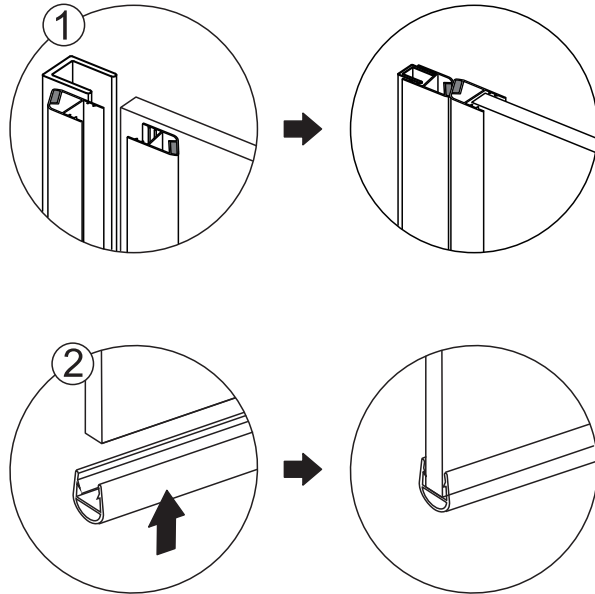
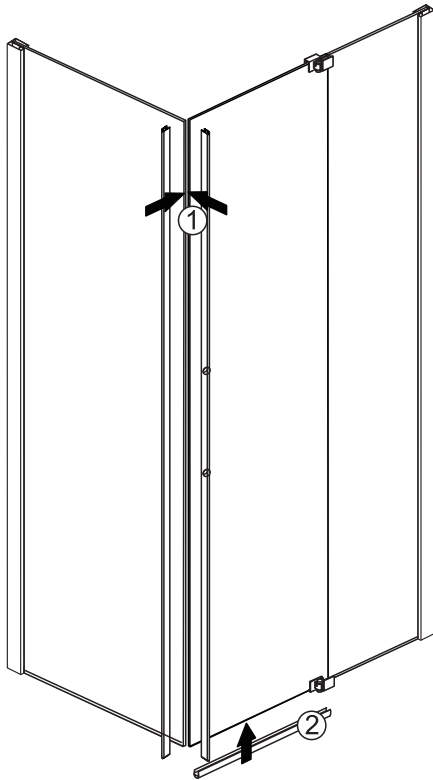
### Step 3



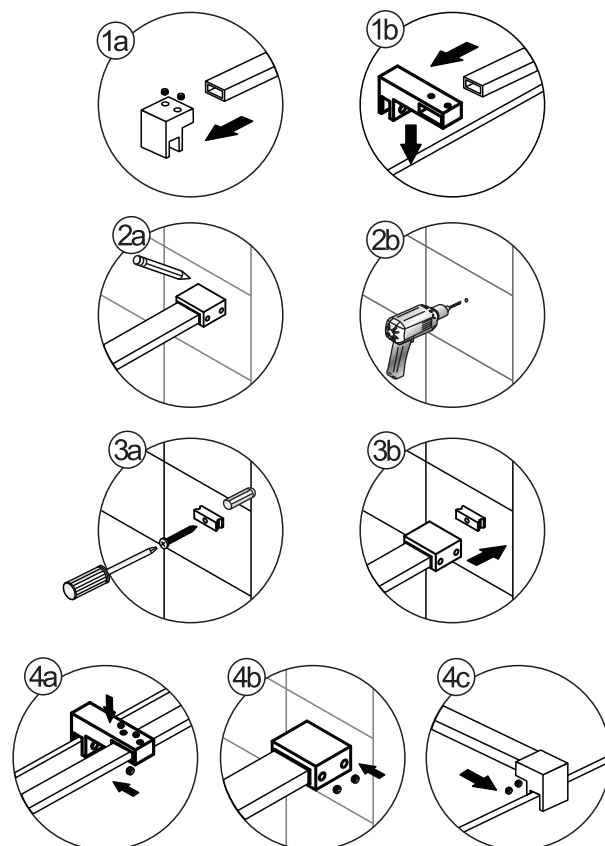
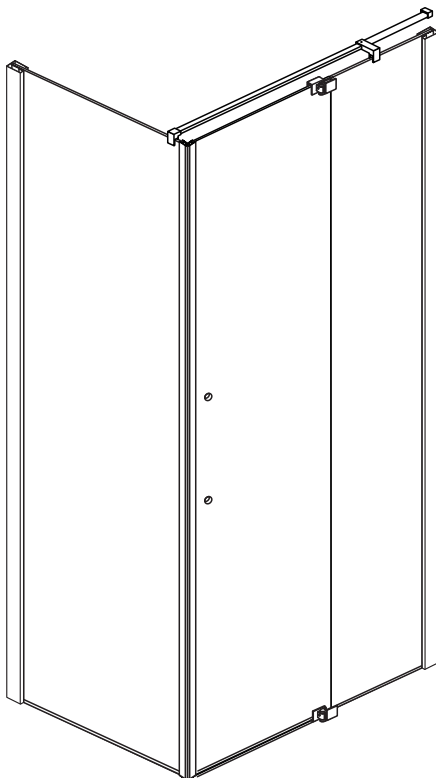
### Step 4



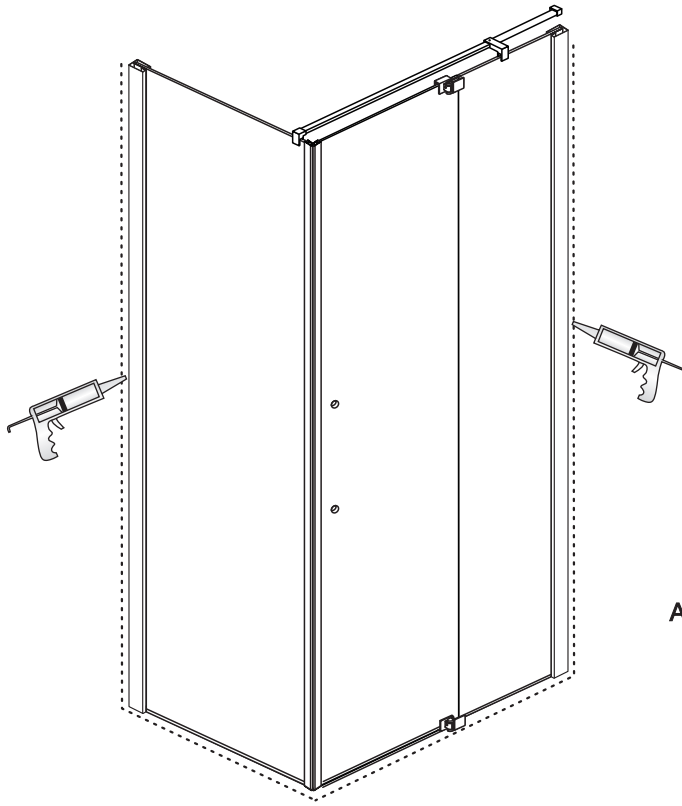
## Step 5



## Step 6



## Step 7



**Allow 24 hours for silicone to dry before use.**



**QUALITY AND SERVICE YOU CAN COUNT ON SINCE 1985**

For over 33 years, Nerval Corporation has been importing, wholesaling and manufacturing a wide variety of products. Wholesale only, we sell to retail stores, hotels, contractors and builders. If you require high quality products at truly affordable prices, contact us

---

Tel: 780 452 1111 | Email: [info@nervalcorp.com](mailto:info@nervalcorp.com) | [www.nervalcorp.com](http://www.nervalcorp.com)

NERVAL is a registered trade mark of NERVAL Corporation

Copyright © 2018