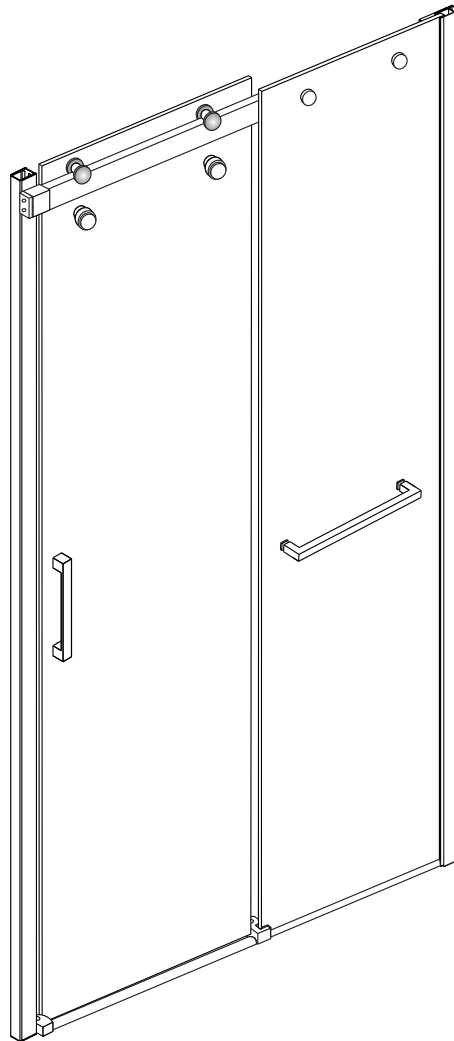


EMMA SHOWER DOOR

Installation Instructions



GD-EM5679CC/6079CC/6066CC

Size: 54.82" – 56" x 79" (GD-EM5679CC)

58.82" – 60" x 79" (GD-EM6079CC)

58.82" – 60" x 66" (GD-EM6066CC)

◆ General Information

Please inspect the product immediately upon receipt for transit damage, missing packs/parts or manufacturing fault. Damage reported later cannot be accepted. Please handle the product with care avoiding knocks and shock loading to all sides and edges of the glass.

Notes: Safety glass can not be re-worked.

Please read these instructions carefully before start of installation.

Special care should be taken when drilling walls to avoid hidden pipes or electrical cables.

Note: This product is heavy and may require two people to install.

Aftercare instructions

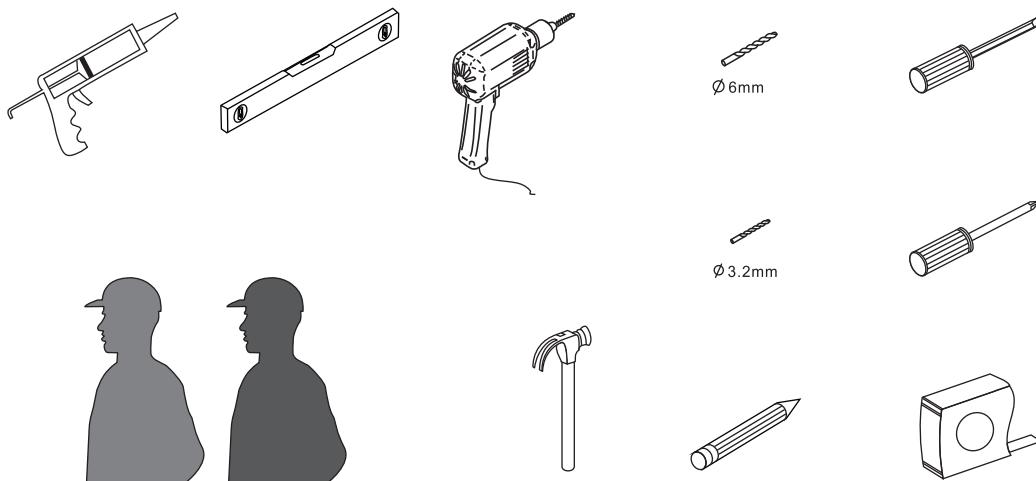
After use, your shower should be cleaned with soap and water. This is particularly important in hard water districts where insoluble lime salts may be deposited and allowed to build up.

Cleaners of a gritty or abrasive nature should not be used. Care should be taken to avoid contact with strong chemicals such as organic solvents and strippers.

Glass cleaners can be used but with caution, if in doubt contact the manufacturer of the cleaner in question.

Please keep these instructions for aftercare and customer service details.

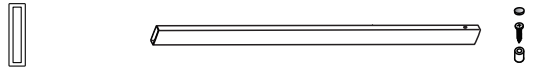


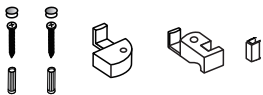





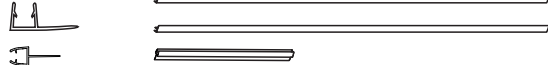


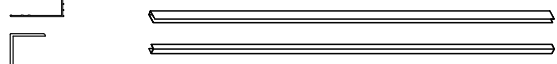
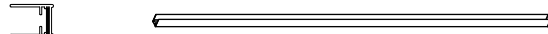
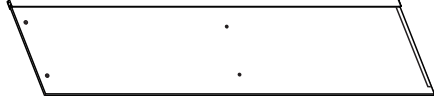
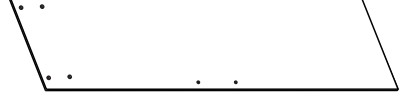
Tools Required



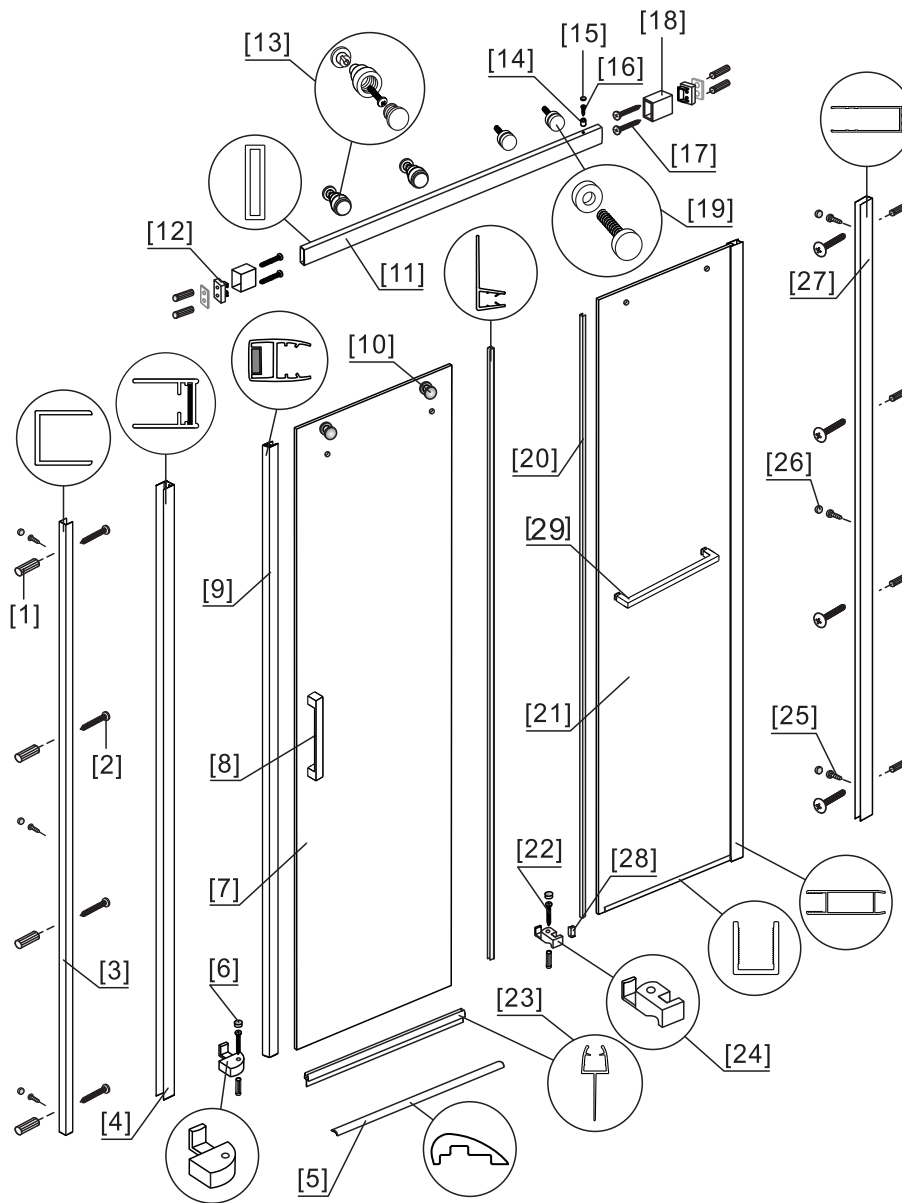
This product is heavy and may require two people to install.



◆ Box Contents:

[1]	[11] 1xHorizontal Rails. [14] 1xFixing Part. [16] 1xScrew M4x12. [15] 1xScrew Cover Cap.	➔	
[2]	1xInstallation Instruction.	➔	
[3]	[8] 1xHandle Set. [29] 1xTowel Bar	➔	
[4]	[24] 2xClips. [22] 2xScrews M4x25. [1] 2xWall Plugs. [6] 2xScrew Cover Caps. [28] 1xWater Deflector .	➔	
[5]	[19] 2xFixing Part. [13] 2xAnti-collision Component.	➔	
[6]	[18] 2xWall Connectors. [12] 2xProfile Covers. [17] 4xScrews M4x35. [1] 4xWall Plugs.	➔	
[7]	[10] 2xTop Rollers.	➔	
[8]	[1] 8xWall Plugs. [2] 8xFlat Screws M4x35.	➔	
[9]	[25] 6xScrews M4x8. [26] 6xScrew Cover Caps.	➔	
[10]	[20] 2xWater Deflectors. [23] 1xWater Deflector.	➔	
[11]	[9] 1xMagnetic Seal .	➔	
[12]	[5] 1xAluminum Seal.	➔	
[13]	[27] 1xWall Post. [3] 1xWall Post.	➔	
[14]	[4] 1xPost .	➔	
[15]	[21] 1xFixed Panel .	➔	
[16]	[7] 1xDoor Panel.	➔	

◆ Assembly Drawing

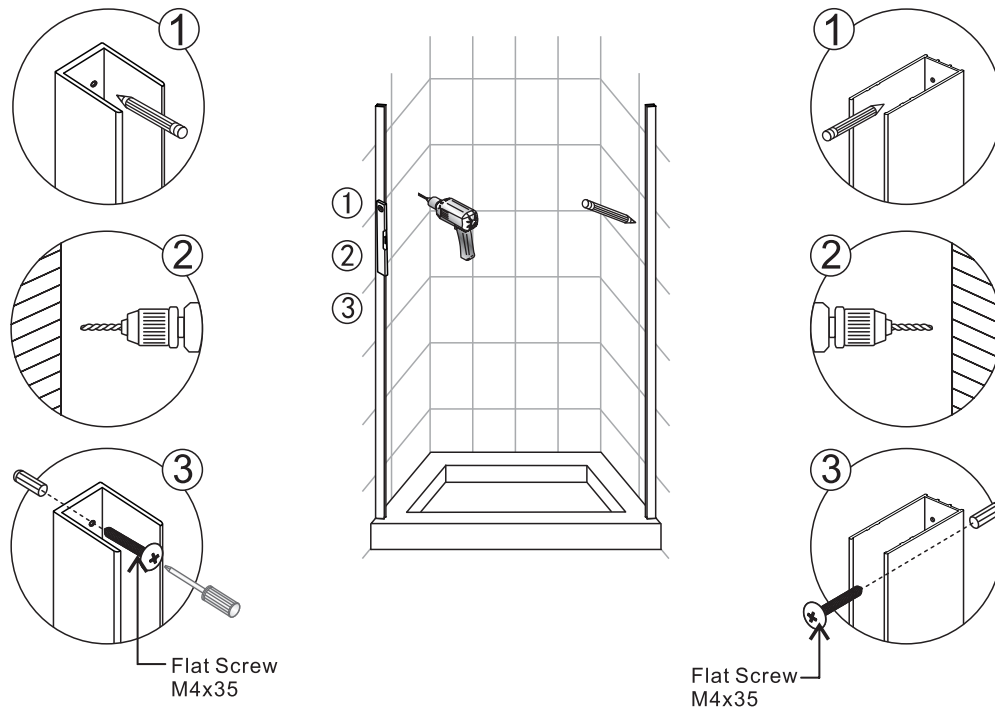


- [1] 14xWall Plugs
- [2] 8xFlat Screws M4x35
- [3] 1xWall Post
- [4] 1xPost
- [5] 1xAluminum Seal
- [6] 2xScrew Cover Caps
- [7] 1xDoor Panel
- [8] 1xHandle Set
- [9] 1xMagnetic Seal
- [10] 2xTop Rollers
- [11] 1xTop Horizontal Rail
- [12] 2xProfile Covers
- [13] 2xAnti-collision Component
- [14] 1xFixing Part

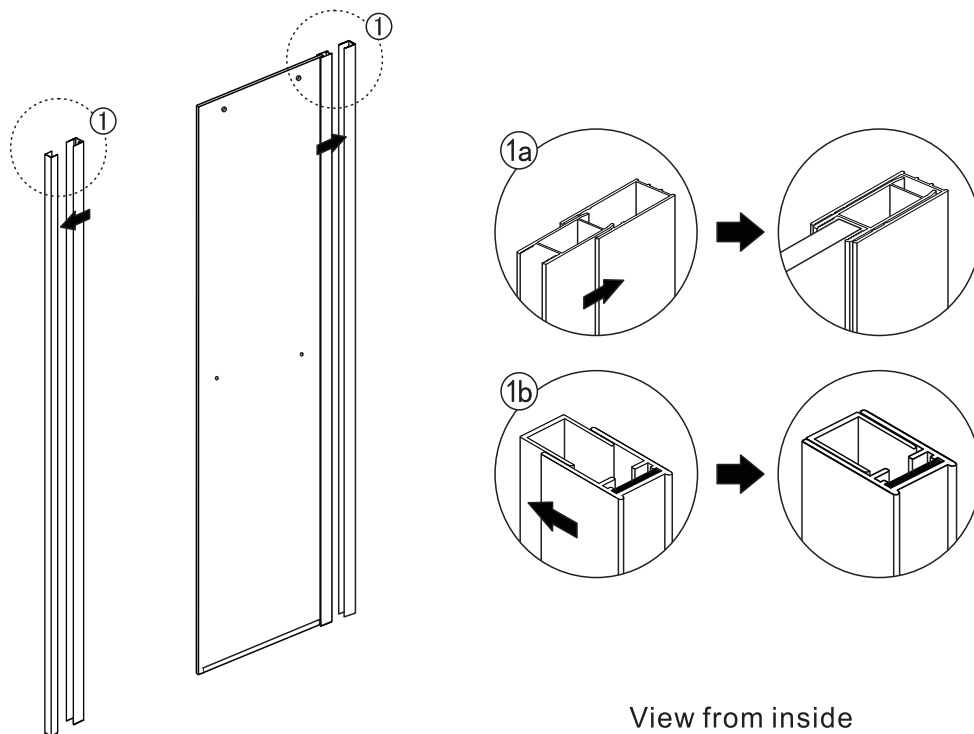
- [15] 1xScrew Cover Cap
- [16] 1xScrew M4x12
- [17] 4xScrews M4x35
- [18] 2xWall Connectors
- [19] 2xFixing Part
- [20] 2xWater Deflectors
- [21] 1xFixed Panel
- [22] 2xScrews M4x25
- [23] 1xWater Deflector
- [24] 2xClips
- [25] 7xScrews M4x8
- [26] 7xScrew Cover Caps
- [27] 1xWall Post
- [28] 1xWater Deflector
- [29] 1xTowel Bar

◆ Installation Steps

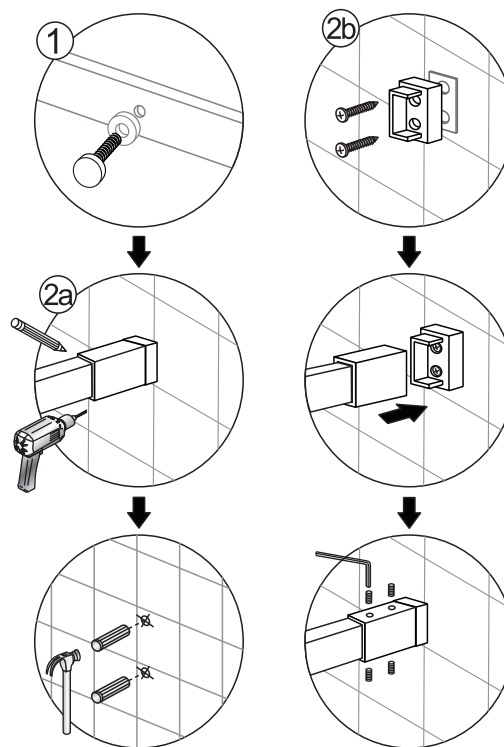
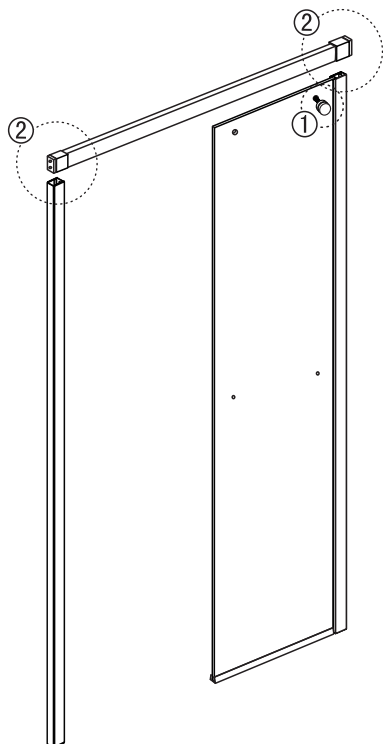
Step 1



Step 2

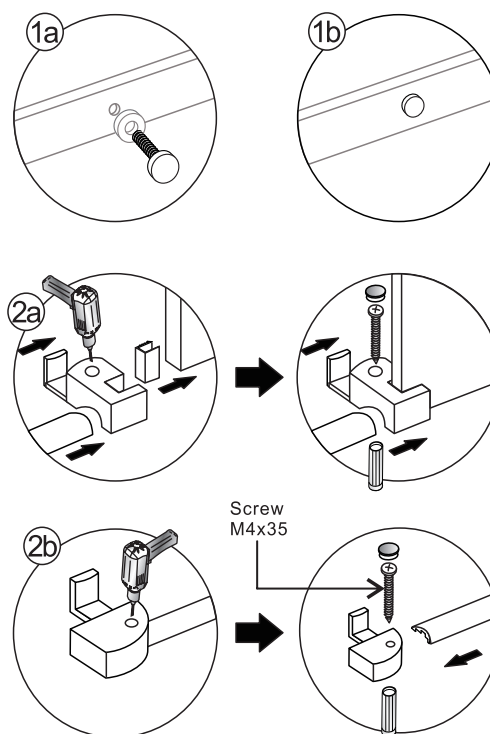
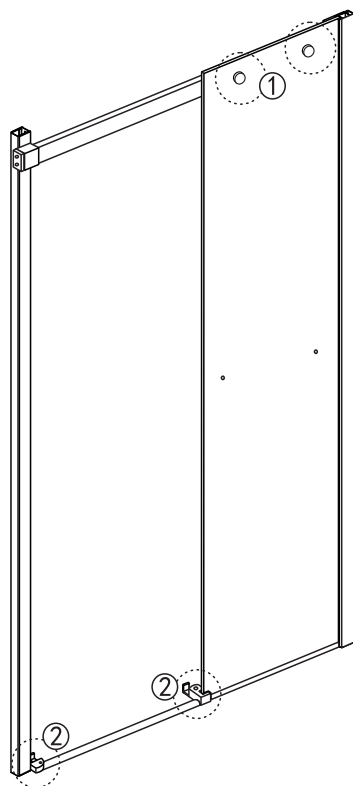


Step 3



View from inside

Step 4

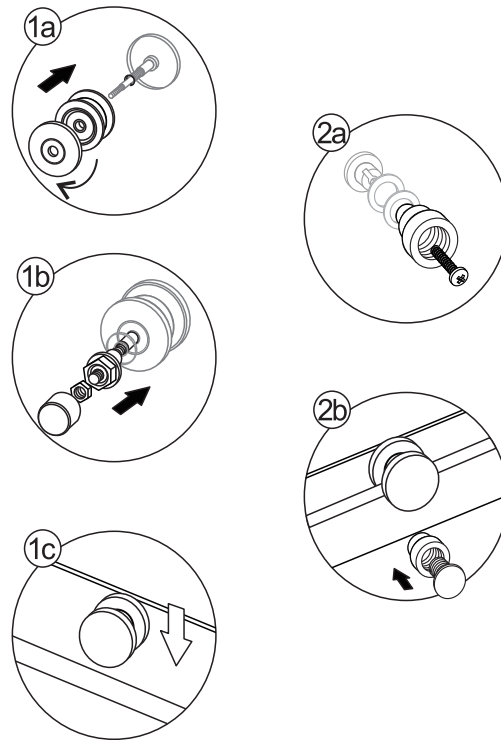
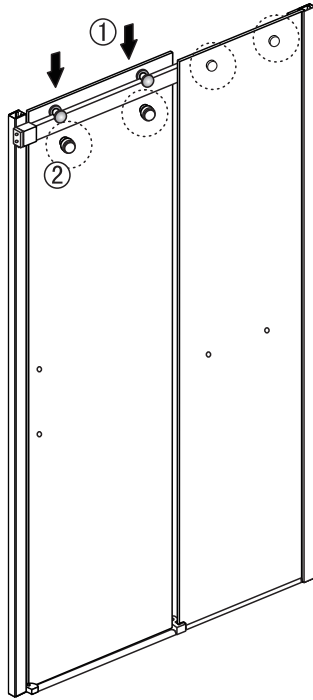


Screw
M4x35



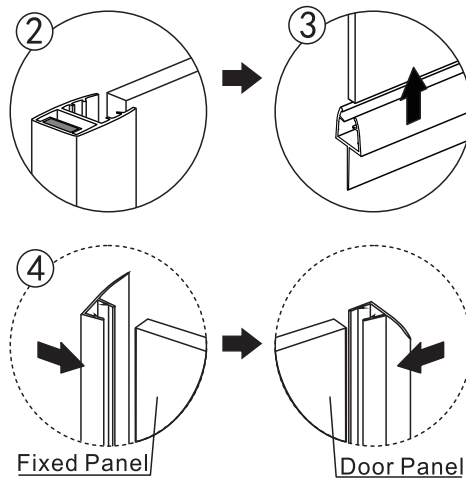
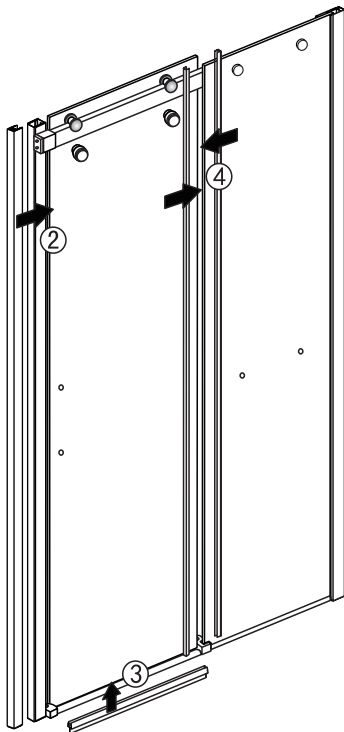
If the shower enclosure installed with a tray,
please make holes in the tray with ϕ 3mm
drill and wall plugs are required;
If not, please make holes in the floor with ϕ 6mm
drill and wall plugs are not required.

Step 5



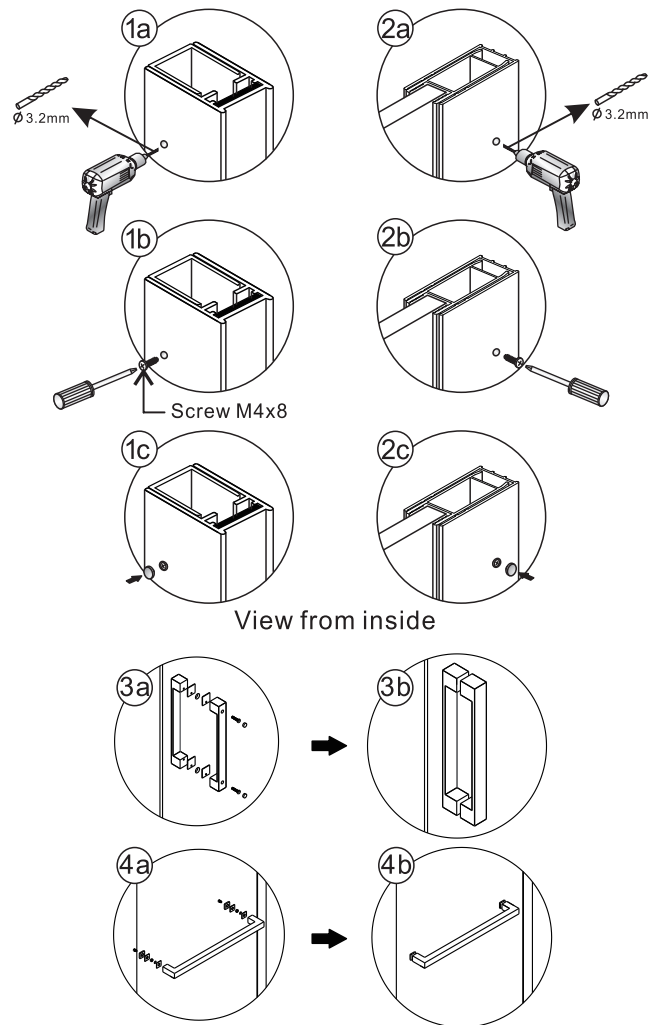
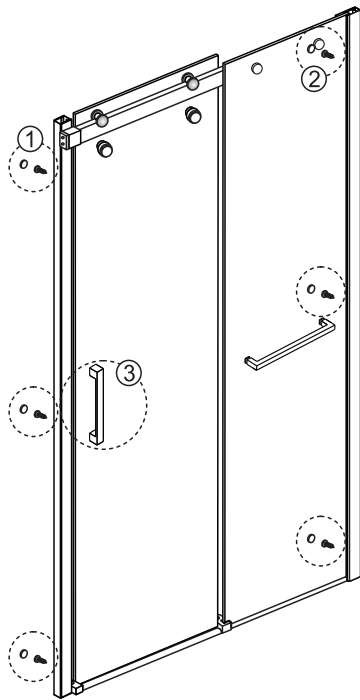
View from inside

Step 6

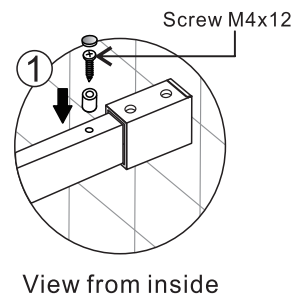
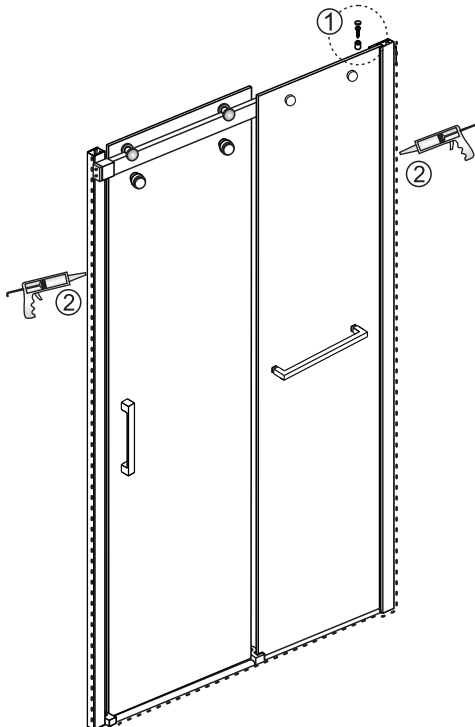


Ensure wall profiles are plumb.
Adjust enclosure to be square and level.
Wheels should be adjusted to square the
doors and ensure smooth running.

Step 7



Step 8



Allow 24 hours for silicone to dry before use.



QUALITY AND SERVICE YOU CAN COUNT ON SINCE 1985

For over 33 years, Nerval Corporation has been importing, wholesaling and manufacturing a wide variety of products. Wholesale only, we sell to retail stores, hotels, contractors and builders. If you require high quality products at truly affordable prices, contact us

Tel: 780 452 1111 | Email: info@nervalcorp.com | www.nervalcg.com

NERVAL is a registered trade mark of NERVAL Corporation

Copyright © 2018