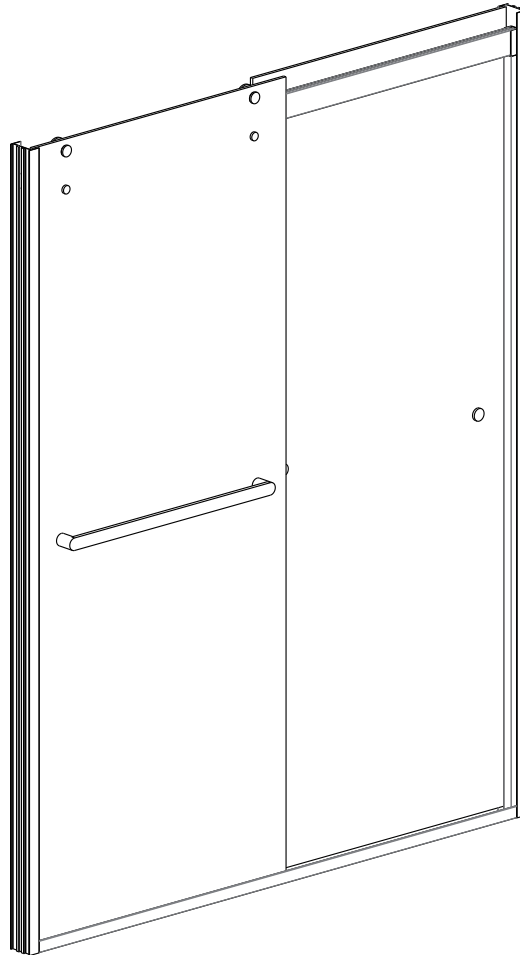


# ANNA SHOWER DOOR

## Installation Instructions



### **GD-AN6076**

Size: 60" x 76" (GD-AN6076)

## ◆ General Information

Please inspect the product immediately upon receipt for transit damage, missing packs/parts or manufacturing fault. Damage reported later cannot be accepted. Please handle the product with care avoiding knocks and shock loading to all sides and edges of the glass.

### **Notes: Safety glass can not be re-worked.**

Please read these instructions carefully before start of installation.

Special care should be taken when drilling walls to avoid hidden pipes or electrical cables.

Note: This product is heavy and may require two people to install.

## **Aftercare instructions**

After use, your shower should be cleaned with soap and water. This is particularly important in hard water districts where insoluble lime salts may be deposited and allowed to build up.

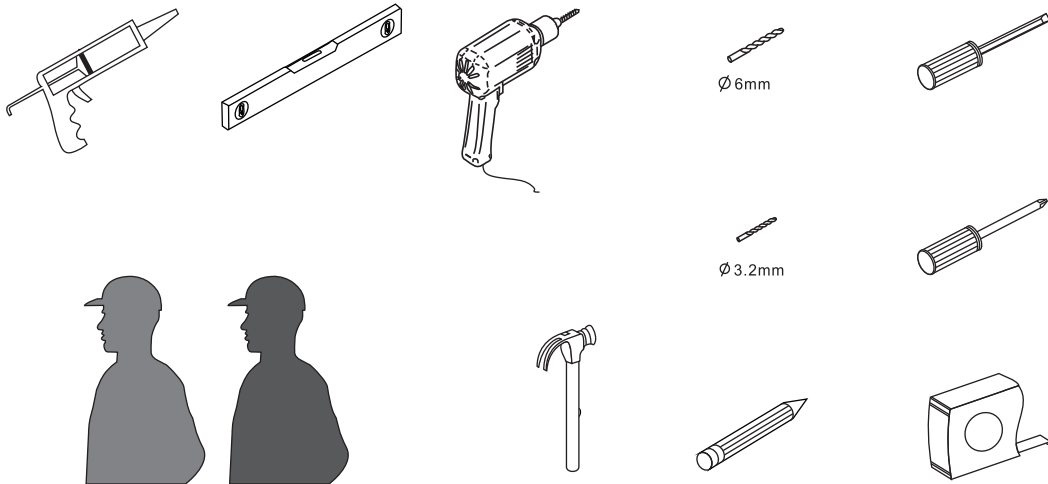
Cleaners of a gritty or abrasive nature should not be used. Care should be taken to avoid contact with strong chemicals such as organic solvents and strippers.

Glass cleaners can be used but with caution, if in doubt contact the manufacturer of the cleaner in question.

Please keep these instructions for aftercare and customer service details.

---




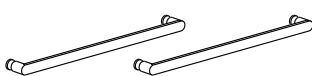

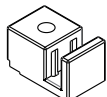






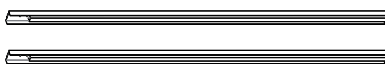
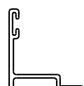
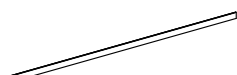

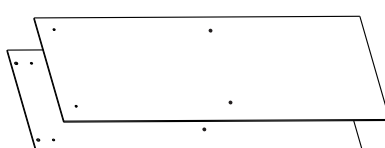
## **Tools Required**



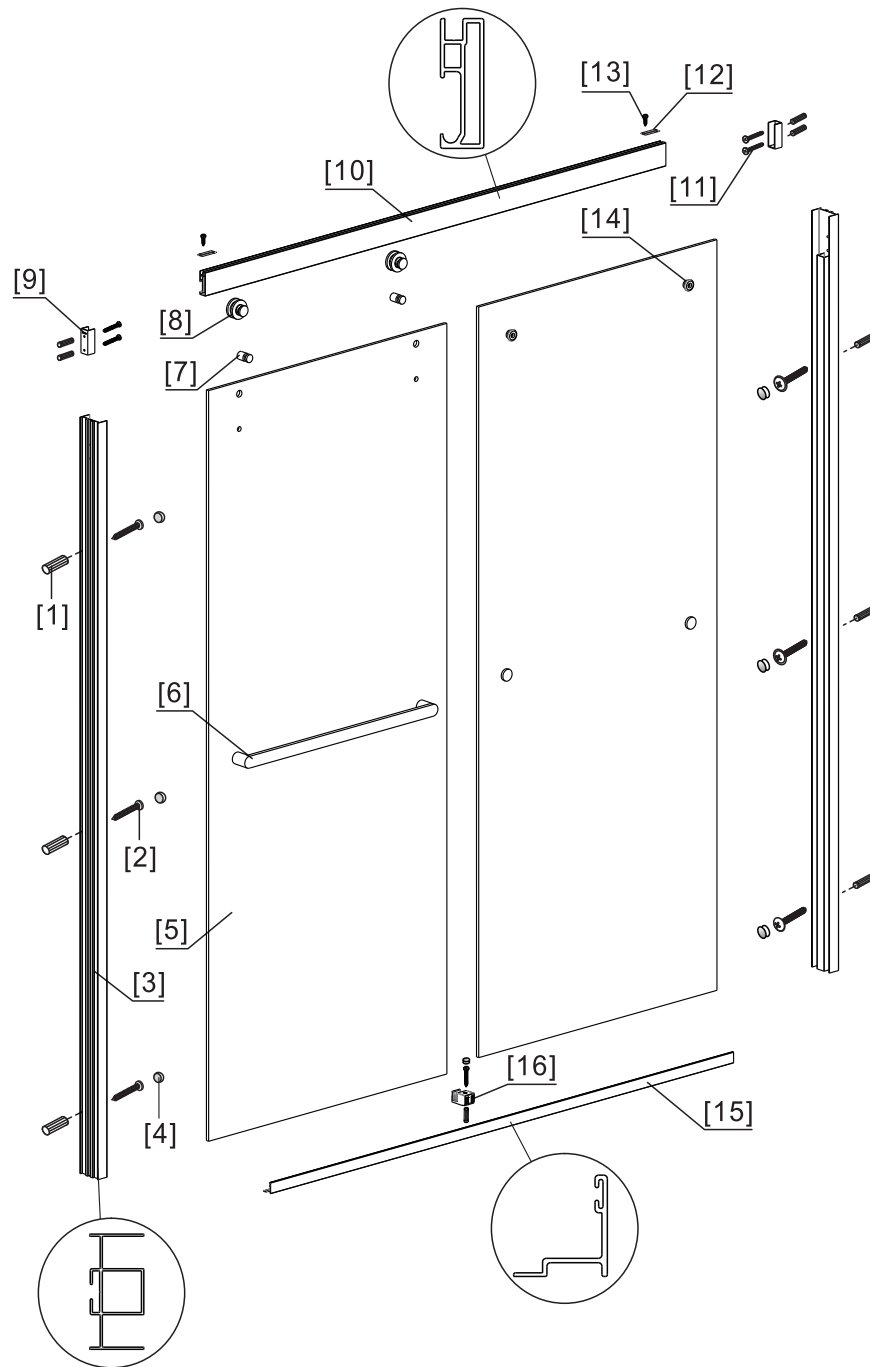
**This product is heavy and may require two people to install.**



## ◆ Box Contents:

<b>[1]</b>	1xHorizontal Rail.	➔		
<b>[2]</b>	1xInstallation Instruction.	➔		
<b>[3]</b>	2xHanle Sets.	➔		
<b>[4]</b>	1xCliP. 1xWall Plug. 1xScrew M4x35. 1xScrew Cover Cap.	➔		
<b>[5]</b>	2xAnti-collision Component.	➔		
<b>[6]</b>	2xWall Connectors. 4xScrews M4x35. 4xWall Plugs. 2xConnecting Pieces. 2xScrews M4x10.	➔		
<b>[7]</b>	2xTop Rollers.	➔		
<b>[8]</b>	6xScrewsM4x35. 6xWall Plugs. 6xScrew Cover Caps.	➔		
<b>[9]</b>	2xWall Posts.	➔		
<b>[10]</b>	1xBottom Horizontal Rail.	➔		
<b>[11]</b>	2xTop Rollers.	➔		
<b>[12]</b>	2xDoor Panels.	➔		

## ◆ Assembly Drawing

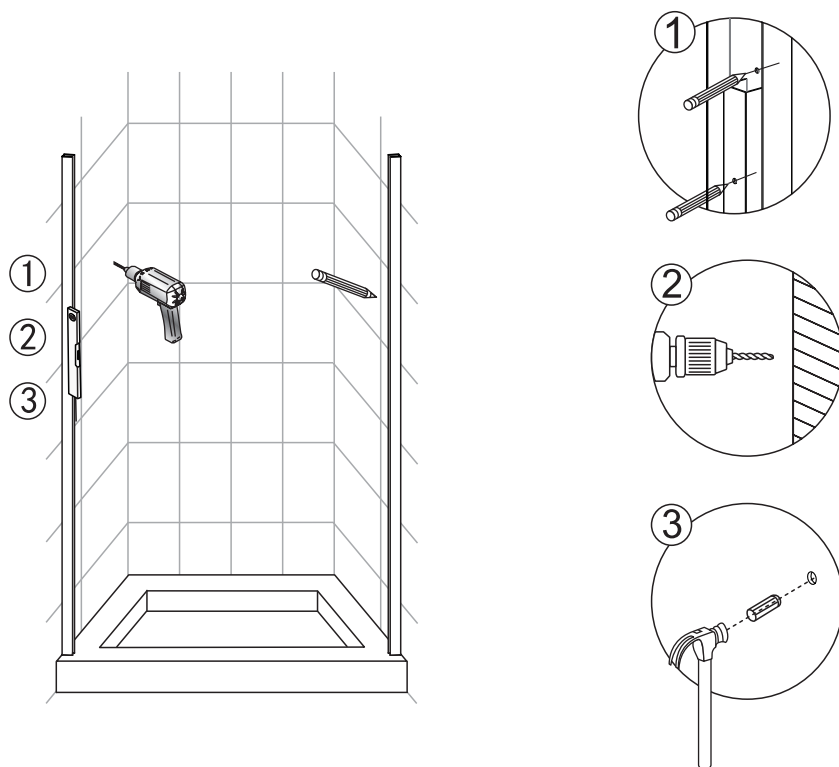


- [1] 11xWall Plugs
- [2] 7xScrews M4x35
- [3] 2xWall Posts
- [4] 7xScrew Cover Caps
- [5] 2xDoor Panels
- [6] 2xHandle Sets
- [7] 2xAnti-collision Components
- [8] 2xTop Rollers

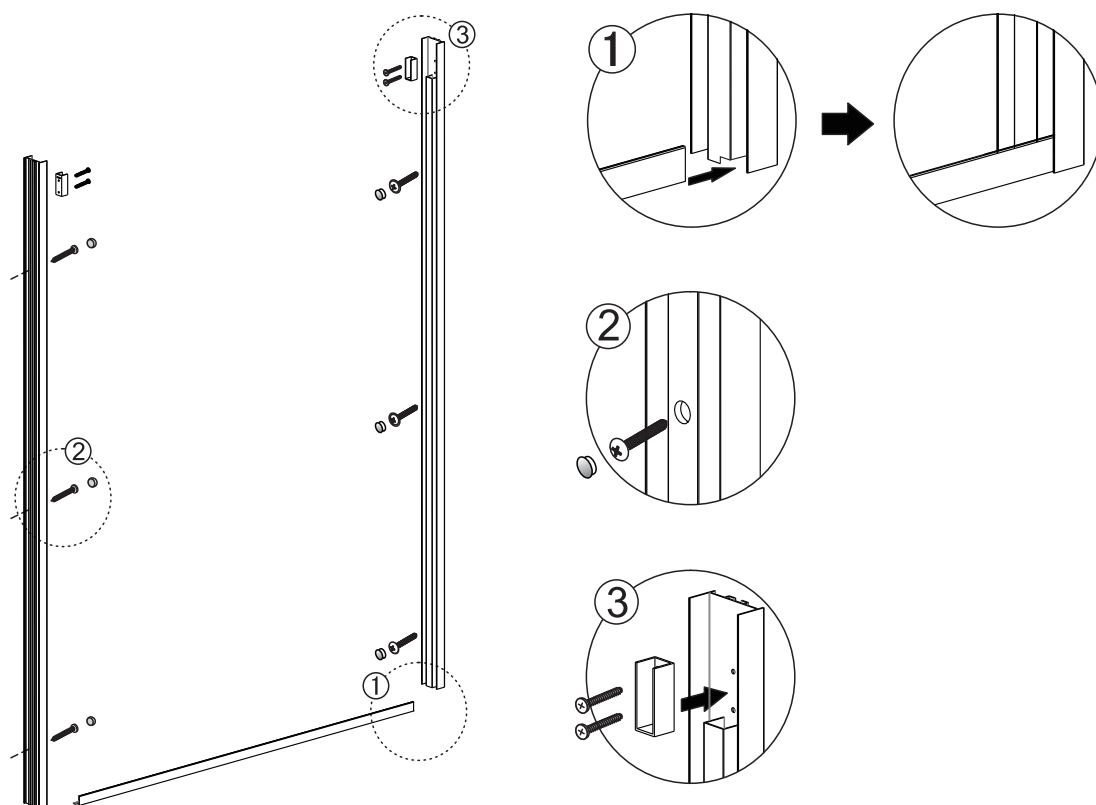
- [9] 2xWall Connectors
- [10] 1xTop Horizontal Rail
- [11] 4xScrews M4x35
- [12] 2xConnecting Pieces
- [13] 2xScrews M4x10
- [14] 2xTop Rollers
- [15] 1xBottom Horizontal Rail
- [16] 1xClip

# ◆ Installation Steps

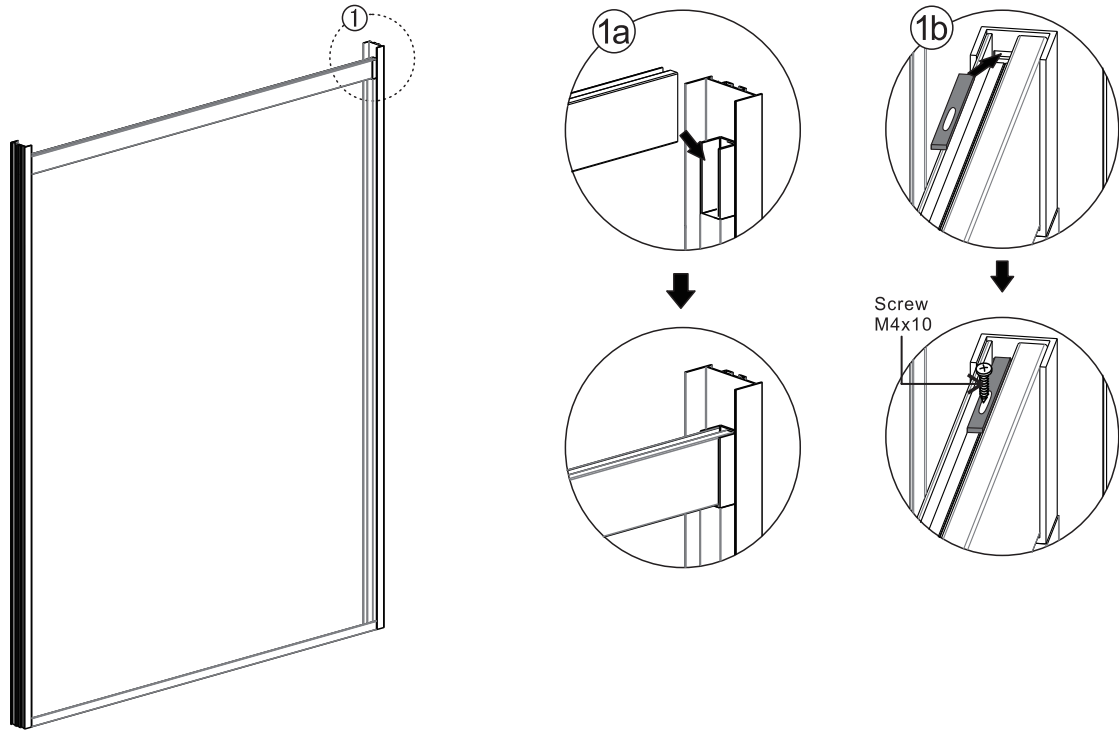
## Step 1



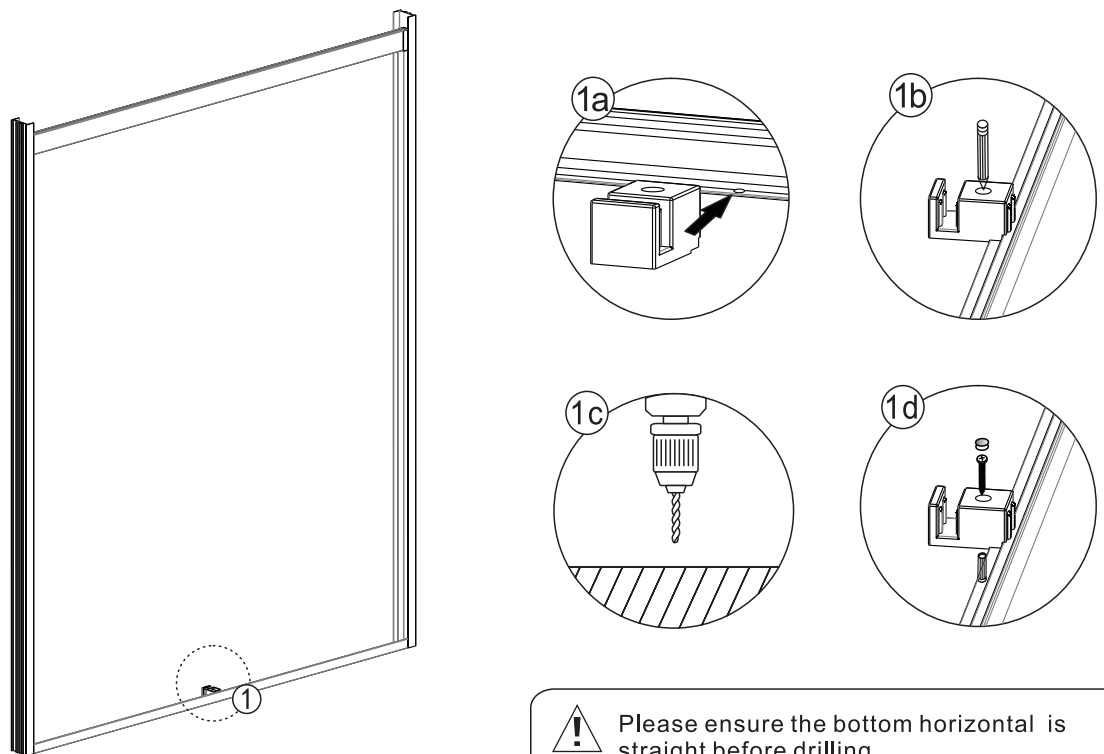
## Step 2



## Step 3

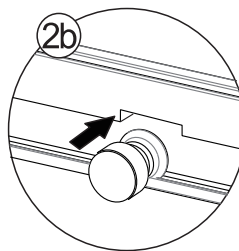
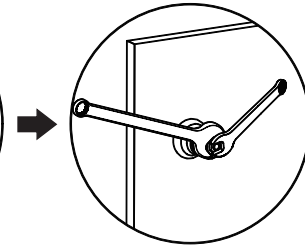
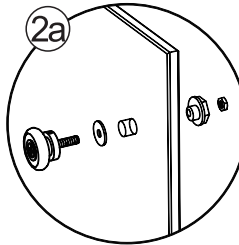
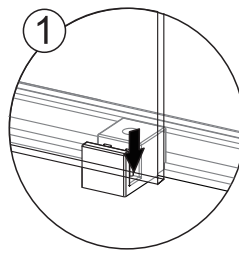
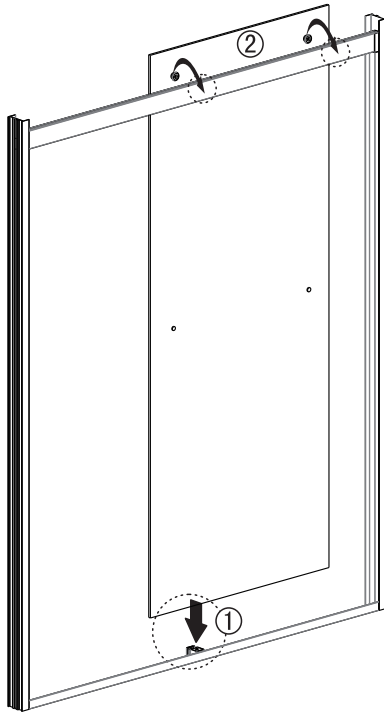


## Step 4



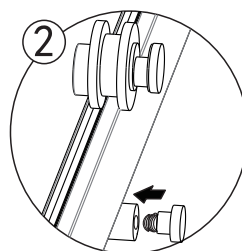
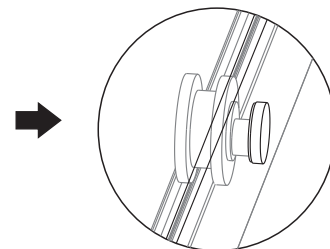
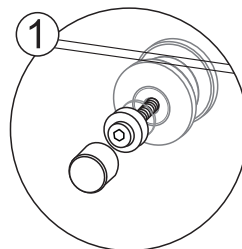
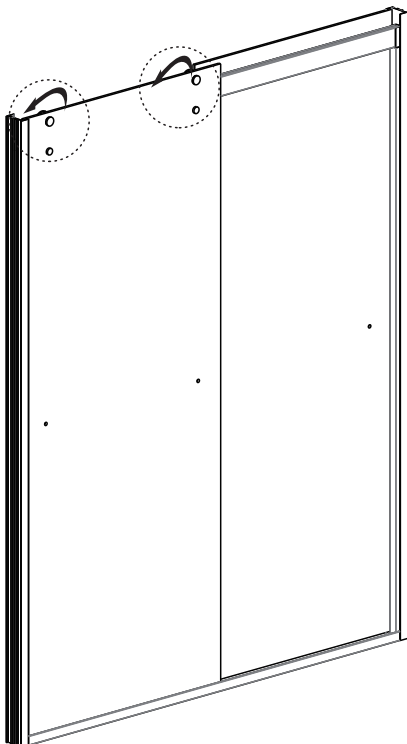
Please ensure the bottom horizontal is straight before drilling

## Step 5

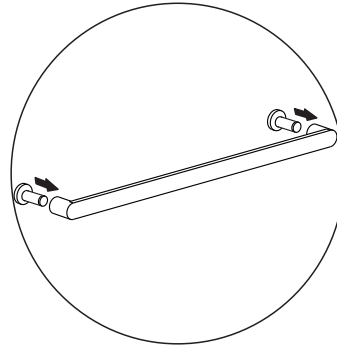
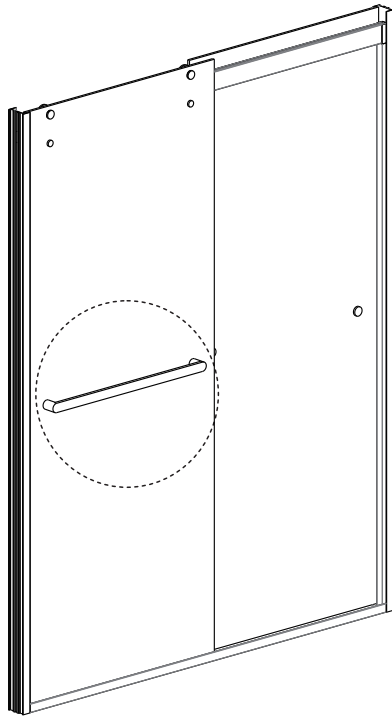


View from inside

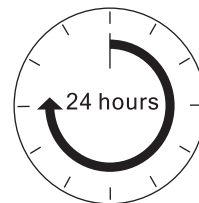
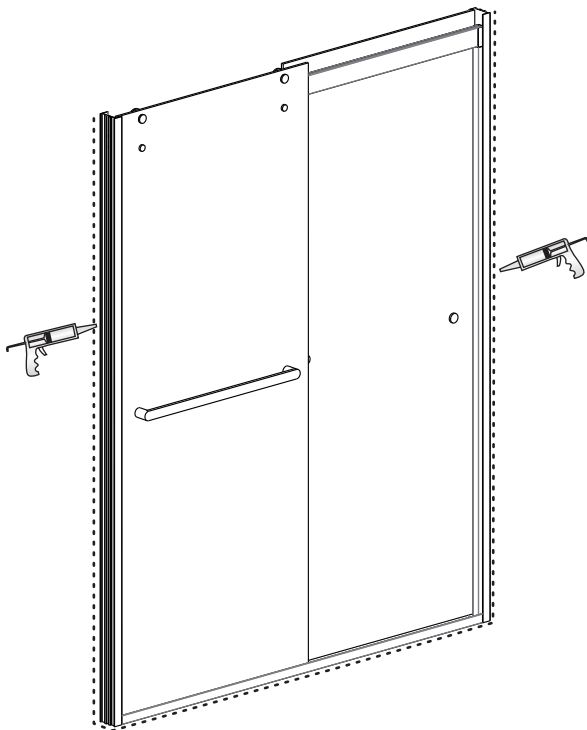
## Step 6



## Step 7



## Step 8



**Allow 24 hours for silicone to dry before use.**





**QUALITY AND SERVICE YOU CAN COUNT ON SINCE 1985**

For over 33 years, Nerval Corporation has been importing, wholesaling and manufacturing a wide variety of products. Wholesale only, we sell to retail stores, hotels, contractors and builders. If you require high quality products at truly affordable prices, contact us

---

Tel: 780 452 1111 | Email: [info@nervalcorp.com](mailto:info@nervalcorp.com) | [www.nervalcorp.com](http://www.nervalcorp.com)

NERVAL is a registered trade mark of NERVAL Corporation

Copyright © 2018