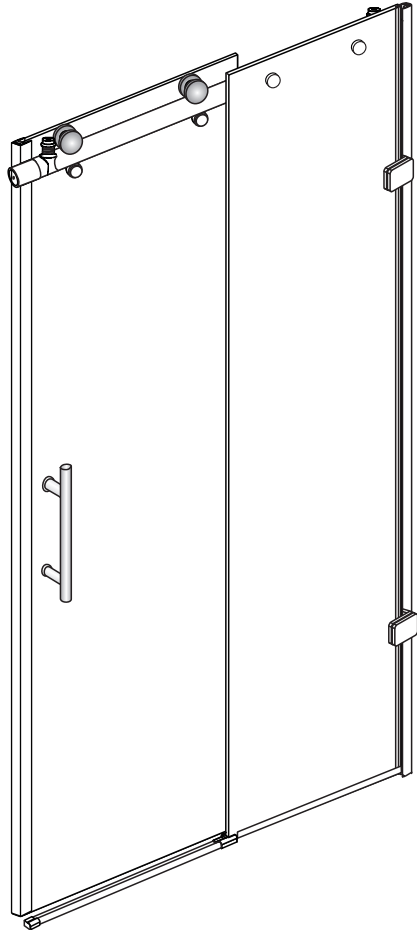


ALENA SHOWER DOOR

Installation Instructions



GD-AL6075CP **GD-AL6079CP**

Size: 56" – 60" x 75" EN (GD-AL6075CP)
56" – 60" x 79" EN (GD-AL6079CP)

◆ General Information

Please inspect the product immediately upon receipt for transit damage, missing packs/parts or manufacturing fault. Damage reported later cannot be accepted. Please handle the product with care avoiding knocks and shock loading to all sides and edges of the glass.

Notes: Safety glass can not be re-worked.

Please read these instructions carefully before start of installation.

Special care should be taken when drilling walls to avoid hidden pipes or electrical cables.

Note: This product is heavy and may require two people to install.

Aftercare instructions

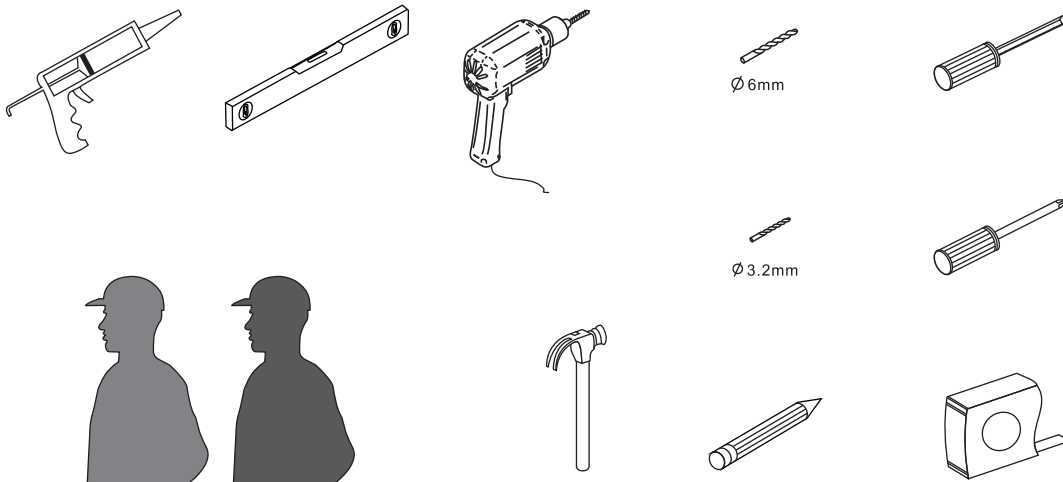
After use, your shower should be cleaned with soap and water. This is particularly important in hard water districts where insoluble lime salts may be deposited and allowed to build up.

Cleaners of a gritty or abrasive nature should not be used. Care should be taken to avoid contact with strong chemicals such as organic solvents and strippers.

Glass cleaners can be used but with caution, if in doubt contact the manufacturer of the cleaner in question.

Please keep these instructions for aftercare and customer service details.

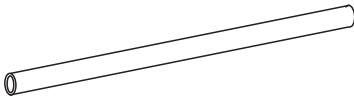

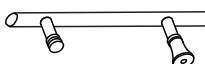









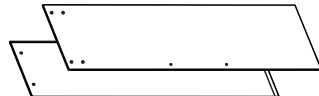


Tools Required



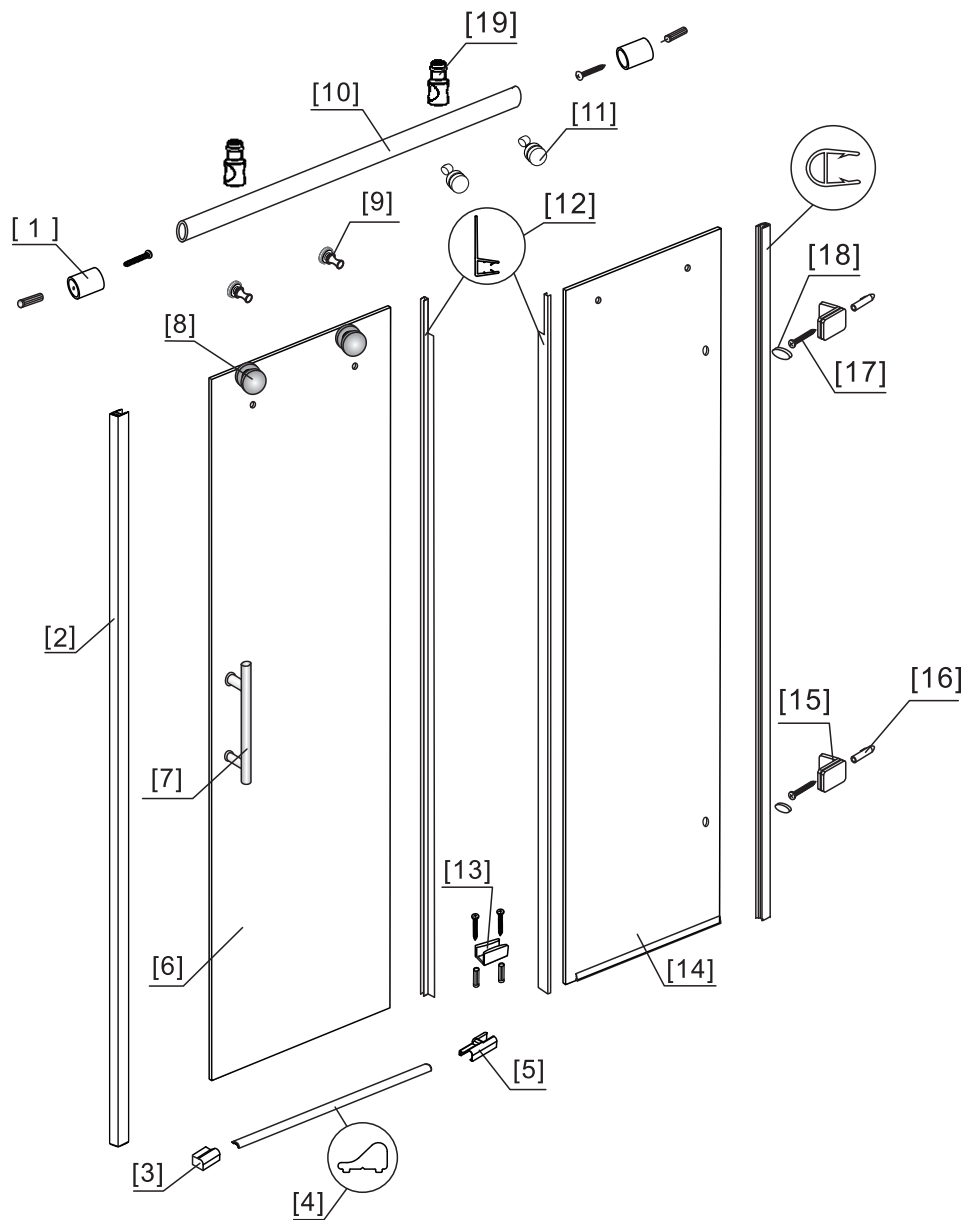
This product is heavy and may require two people to install.



◆ Box Contents:

| | | | |
|---|---|---|---|
| [1] 1xHorizontal Rails. | ➔ | |  |
| [2] 1xInstallation Instruction. | ➔ | |  |
| [3] 1xHandle Set. | ➔ | |  |
| [4] 2xClips | ➔ | |  |
| [5] 2xFixing Part 2xAnti-collision Component | ➔ | |  |
| [6] 2xTop Rollers | ➔ | |  |
| [7] 2xWall Connectors. | ➔ | |  |
| [8] 4xWater Deflectors. | ➔ |  |  |
| [9] 1xAluminum Seal. | ➔ |  |  |
| [10] 1xGlass Track. | ➔ | |  |
| [11] 1xFixed Panel. 1xDoor Panel. | ➔ | |  |
| [12] 2xWall Plugs. 2xScrews M5x35. 2xHinges. 2xCover Caps. | ➔ | |  |
| [13] 2xGlass Blocks. | ➔ | |  |

◆ Assembly Drawing

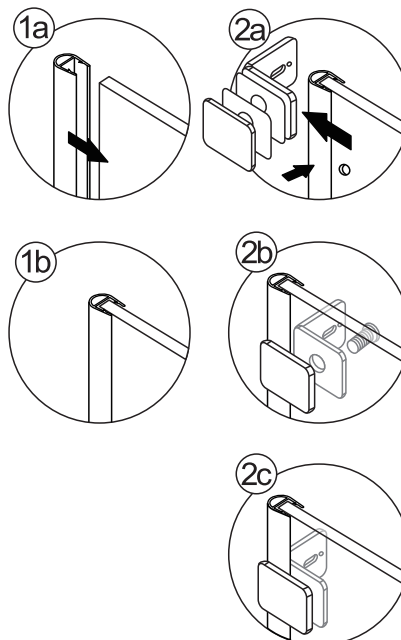
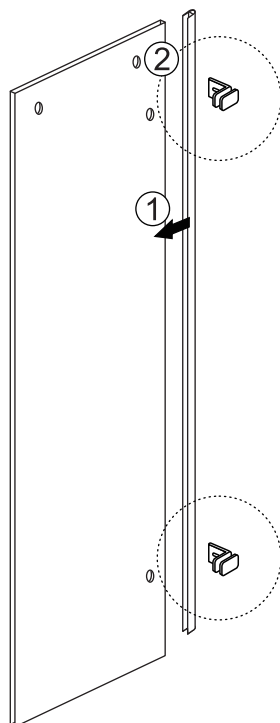


- [1] 2xWall Connectors
- [2] 2xWater Deflectors
- [3] 1xClip
- [4] 1xAluminum Seal
- [5] 1xClip
- [6] 1xDoor Panel
- [7] 1xHandle Set
- [8] 2xTop Rollers
- [9] 2xAnti-collision Components

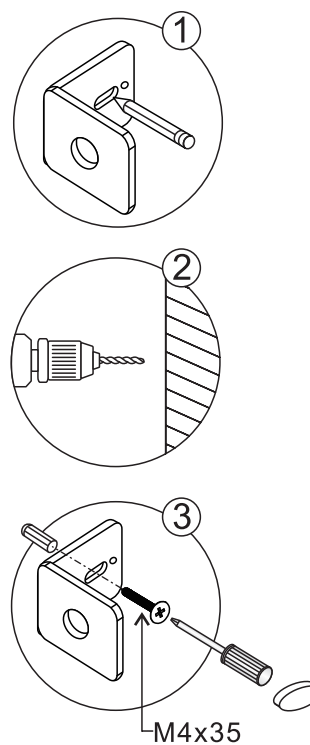
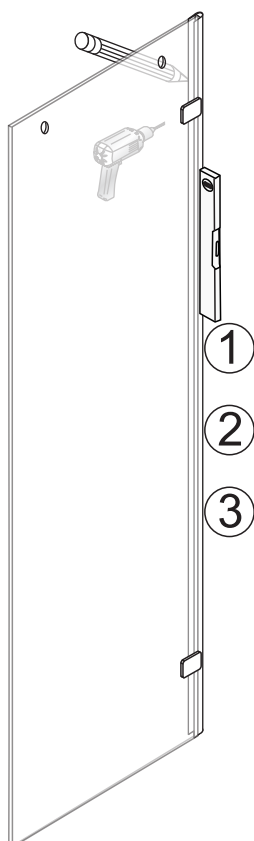
- [10] 1xHorizontal Rail
- [11] 2xFixing Parts
- [12] 2xWater Deflectors
- [13] 1xGlass Track
- [14] 1xFixed Panel
- [15] 2xWall Connectors
- [16] 2xWall Plugs
- [17] 2xScrews M5x35
- [18] 2xCover Caps
- [19] 2xGlass Blocks

◆ Installation Steps

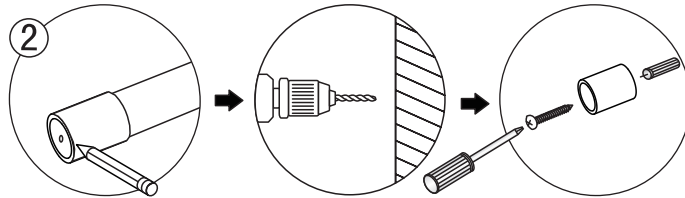
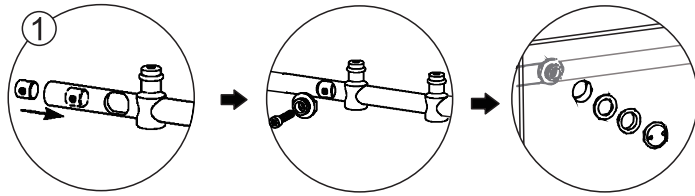
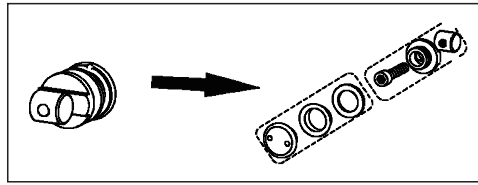
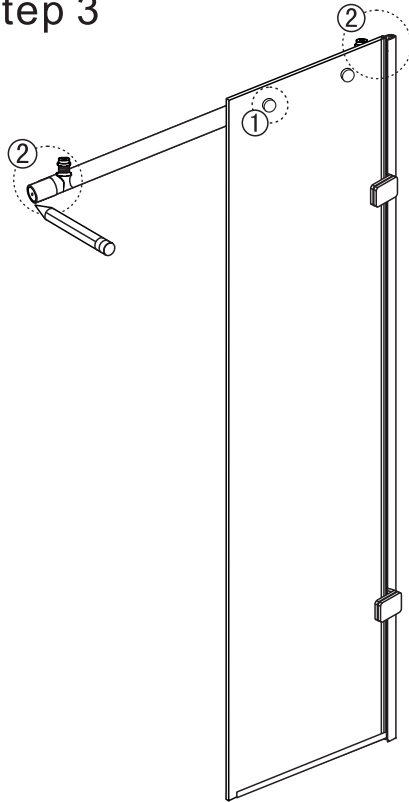
Step 1



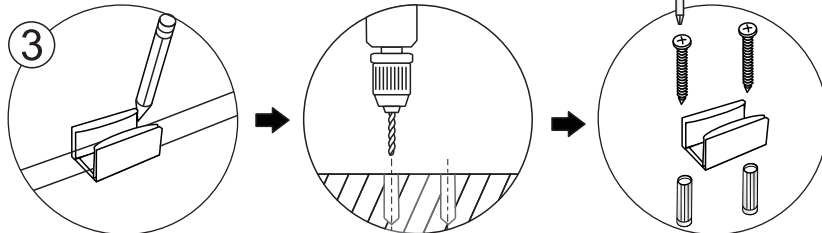
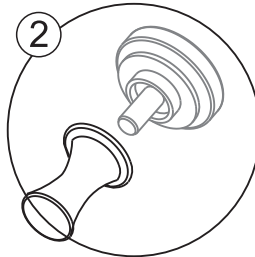
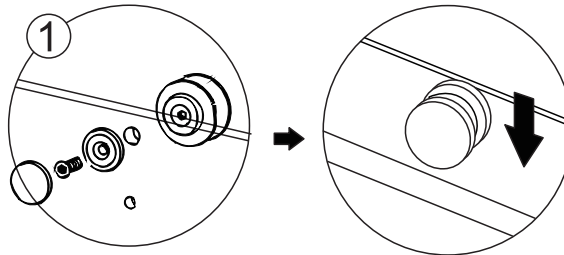
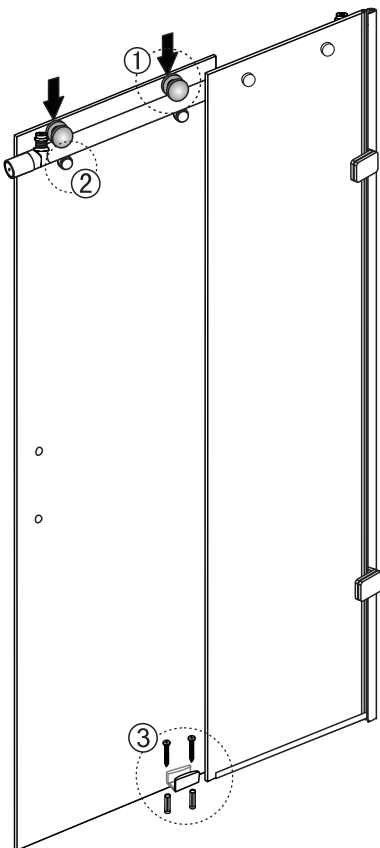
Step 2



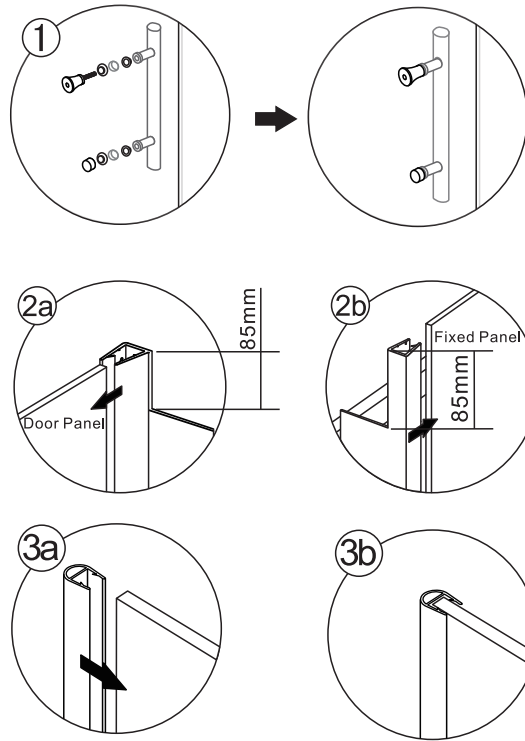
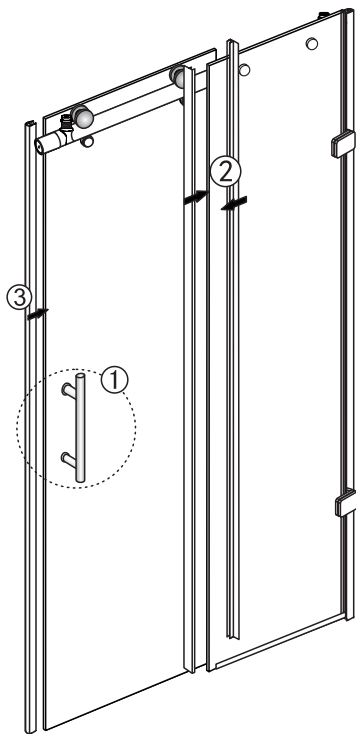
Step 3



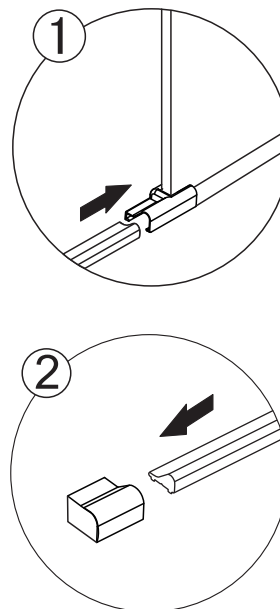
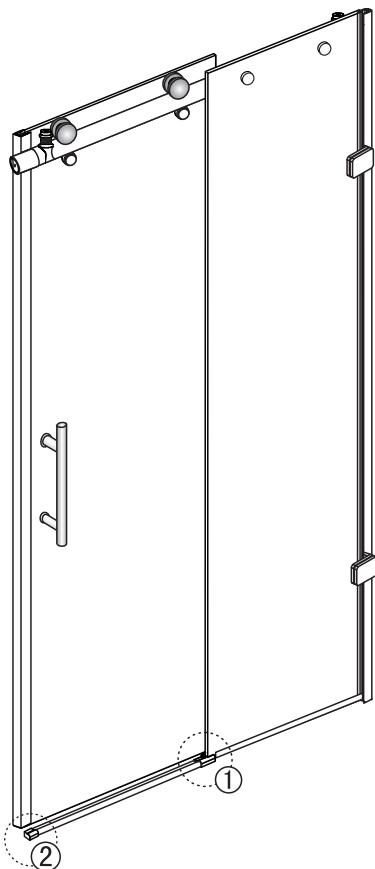
Step 4



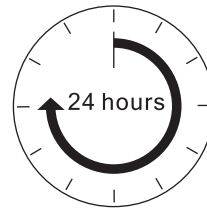
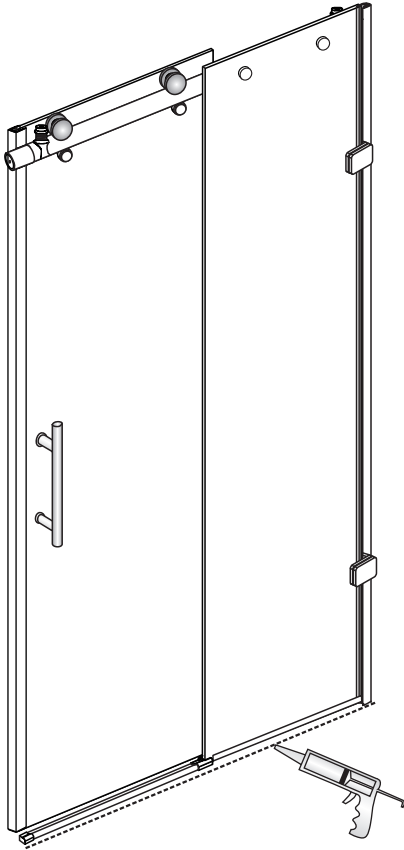
Step 5



Step 6



Step 7



Allow 24 hours for silicone to dry before use.



QUALITY AND SERVICE YOU CAN COUNT ON SINCE 1985

For over 33 years, Nerval Corporation has been importing, wholesaling and manufacturing a wide variety of products. Wholesale only, we sell to retail stores, hotels, contractors and builders. If you require high quality products at truly affordable prices, contact us

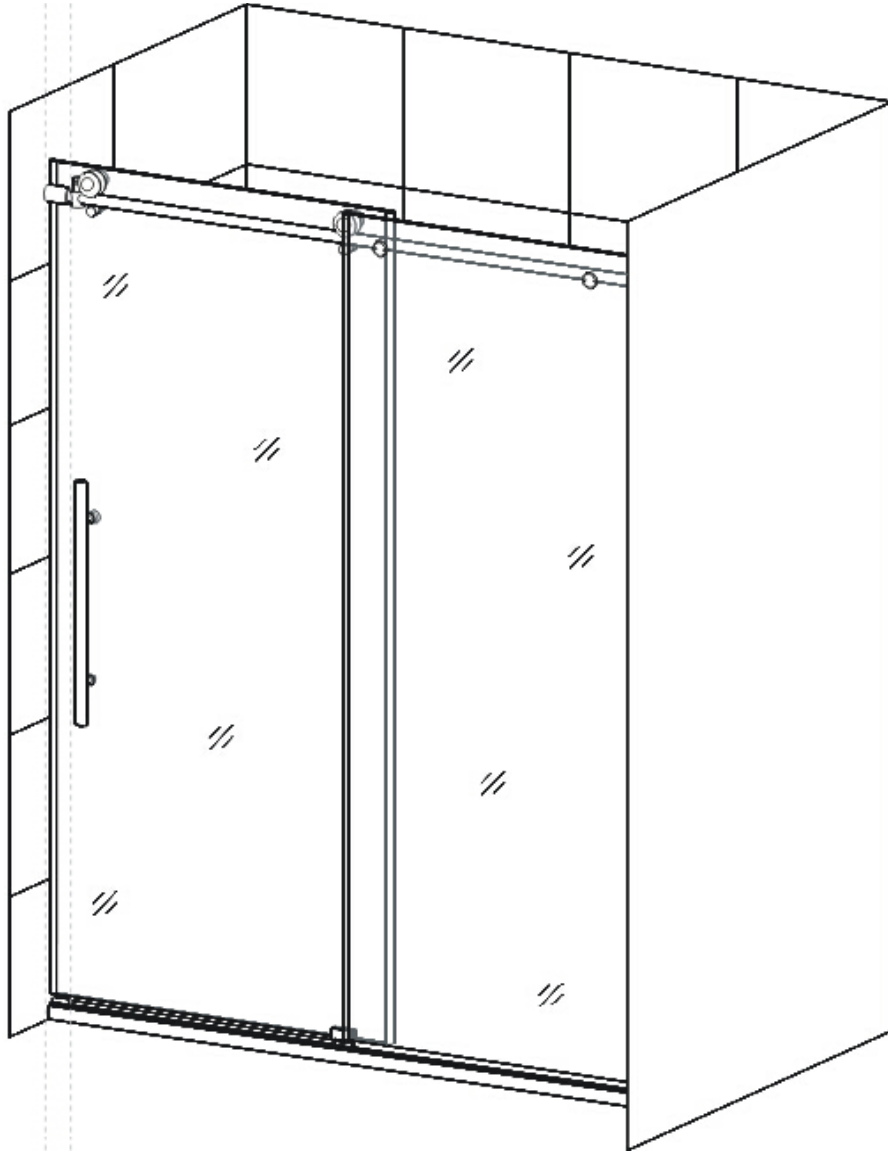
Tel: 780 452 1111 | Email: info@nervalcorp.com | www.nervalcorp.com

NERVAL is a registered trade mark of NERVAL Corporation

Copyright © 2018

ALENA SHOWER DOOR

— INSTALLATION INSTRUCTIONS —



GD-AL6075CP

Please read these instructions carefully before installing. If you have any questions regarding installation, please call our technical support specialists.

Installing Preparations

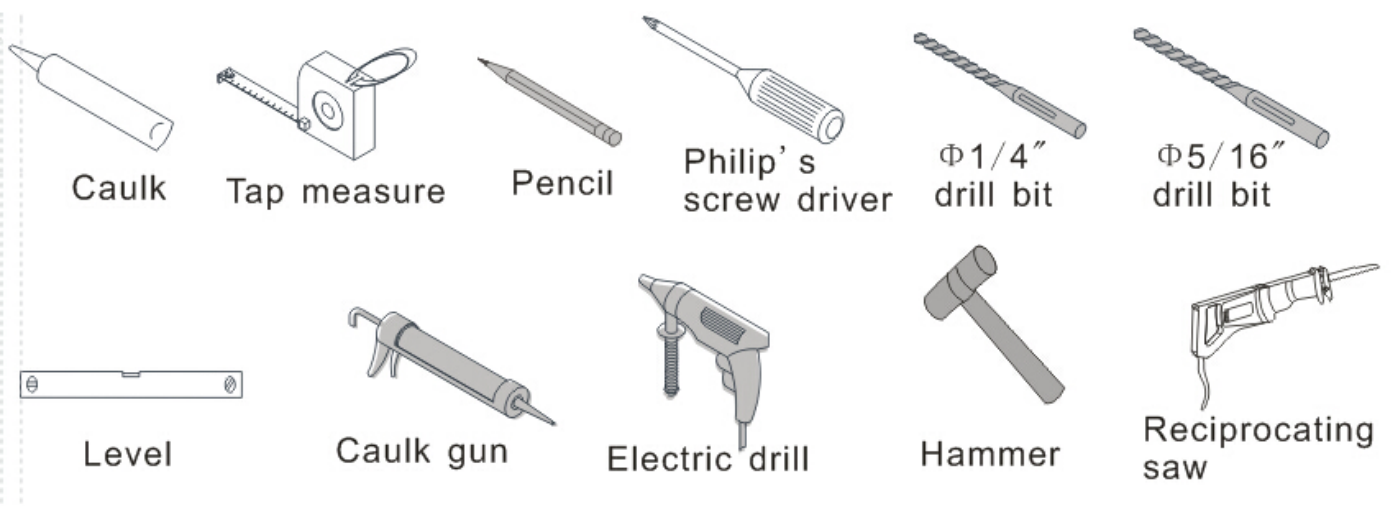
1. After opening the carton, please read the instructions carefully, examine boxes and packages for shipping damage. If the unit has been damaged, has a finishing defect, or has missing parts, please contact our customer support department within 3 business days of the delivery date. Please note that we will not replace any damaged products or missing parts free of charge after 3 business days or if the product has been installed. Feel free to contact us if you have any questions.

2. Please note that you should consult your local building codes with questions on installation compliance standards. Building and plumbing codes may vary by location; we are not responsible for code compliance standards for your project and will not accept any returns.

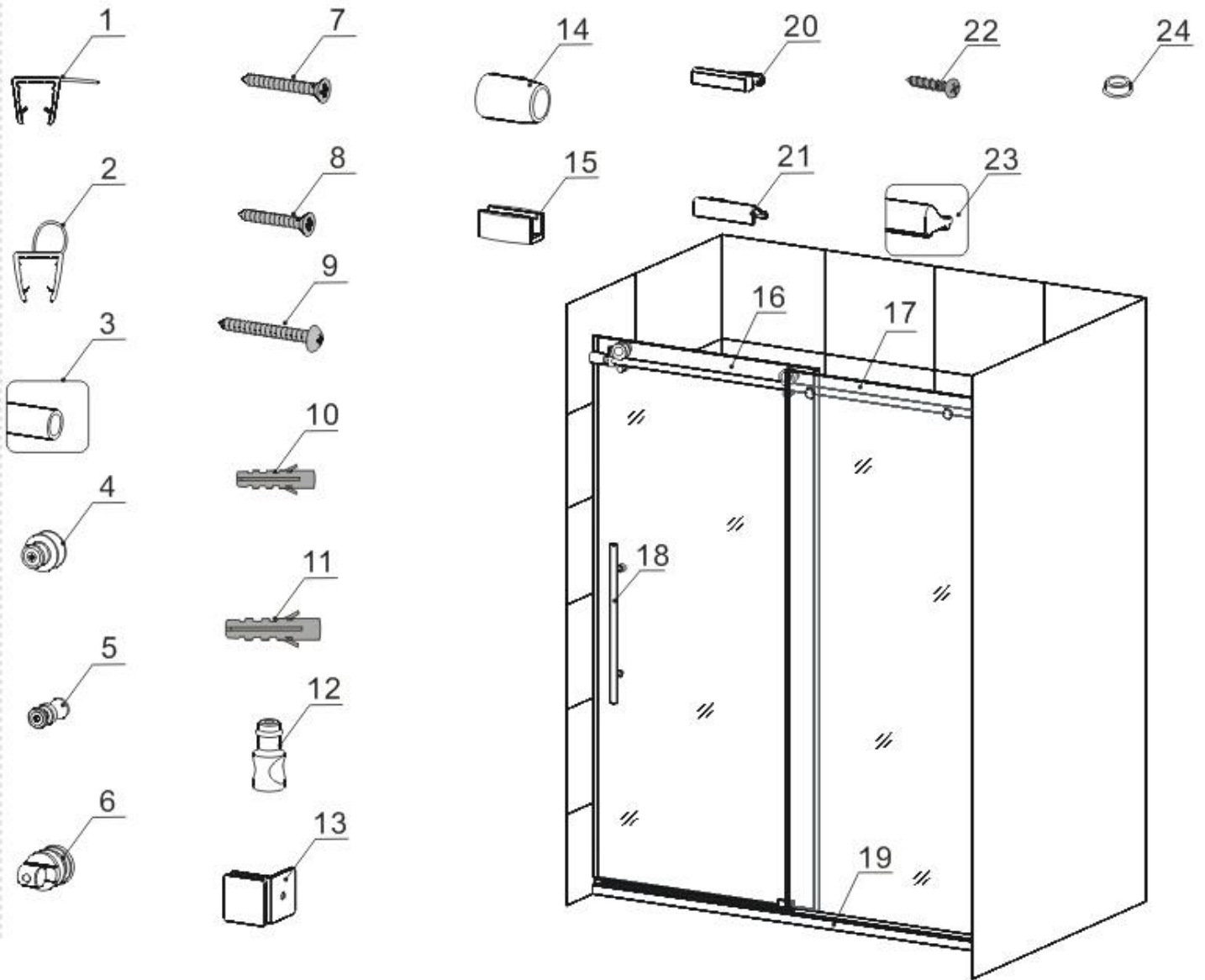
3. If this screen is going to be installed in a new construction, please, install all of the required plumbing and drainage before installing the shower. Use a competent and licensed (if required) plumber for all plumbing installation period.

4. During installing, please make sure the installation surface is level and solid and will be able to support the total weight of the screen. Also, make sure that the walls are plumb. Depending on the type of screen you are installing, some adjustments in leveling may be possible. However, irregular installation, surface level or out of square conditions can result in serious problems for your installation. Please note that some adjustments and drilling may be necessary. Please protect all primary surfaces of the product during installation. Never set your glass down directly onto a tile floor. Always use a piece of wood or cardboard to protect the bottom edge and corners of the glass.

5. Please wear labor glasses during installation.



Detailed Diagram of Shower door/ Bath tub screen Components



Component list

| No. | Name | Q'ty | No. | Name | Q'ty |
|-----|--------------------------|------|-----|--------------------|------|
| 01 | Waterproof strip | 2pcs | 13 | Wall clamp | 2pcs |
| 02 | Sealing strip | 3pcs | 14 | Guide rail bracket | 2pcs |
| 03 | Upper guide rail tube | 1pc | 15 | Guide block | 1pc |
| 04 | Roller | 2pcs | 16 | Moving glass | 1pc |
| 05 | Roller guard | 2pcs | 17 | Stationary glass | 1pc |
| 06 | Glass bracket | 2pcs | 18 | handle | 1pc |
| 07 | Philip's screw ST6*40 | 2pcs | 19 | | |

| | | | | | |
|----|--------------------------|------|----|-----------------------|------|
| 08 | Philip's screw ST5*30 | 2pcs | 20 | Fix clamp-R | 1pc |
| 09 | Philip's screw ST5*40 | 2pcs | 21 | Fix clamp-L | 1pc |
| 10 | Φ 1/4" anchor | 6pcs | 22 | Philip's screw ST4*16 | 2pcs |
| 11 | Φ 5/16" anchor | 2pcs | 23 | Threshold | 1pc |
| 12 | Door stopper | 2pcs | 24 | Screw cover | 2pcs |

WARM TIPS

01:

Open the packaging carefully and inspect all the necessary parts using detailed diagram and component list in your manual as a reference. Before discarding the carton, check for small hardware bags that tend to fall to the bottom of the box. If any parts are damaged or missing, please contact us for replacement.

02:

Retain these installation instructions for future use if in need.

INSTALLATION STEPS:

(Before installing, please make sure the shower base width should $\geq 70\text{mm}$)

1. Measure the distance between two finished walls.
This distance is marked as “W”.

Please see Fig 1 for details:

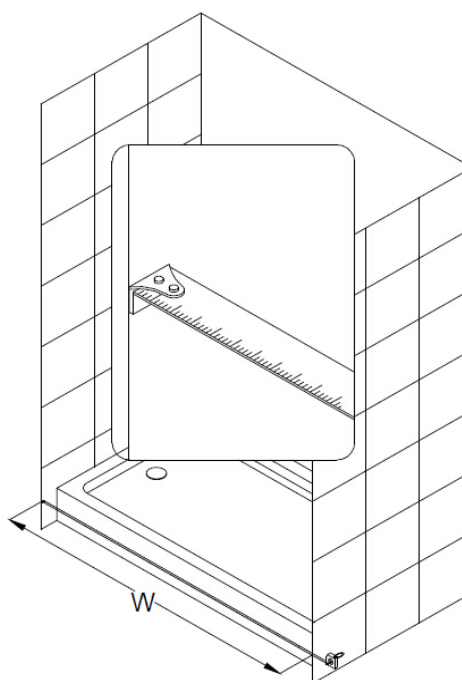


Fig 1

2. Your **Upper Guide rail tube (03)** has been precut for your Shower model opening width: **59"** for shower width. If **W**-width of your wall-to-wall opening is equal to the size of your Shower model, it is unnecessary to cut the **Upper Guide rail tube** and you can continue to Step 3. If **W**-width of your wall-to-wall opening is less than the size of your Shower model, you will need to cut the **Upper Guide rail tube** from the end which is farther from the **Glass brackets (06)** holes. The length to cut off will be **L=Subtract W** from the size of your Shower Model.

Please see **Fig 2** details:

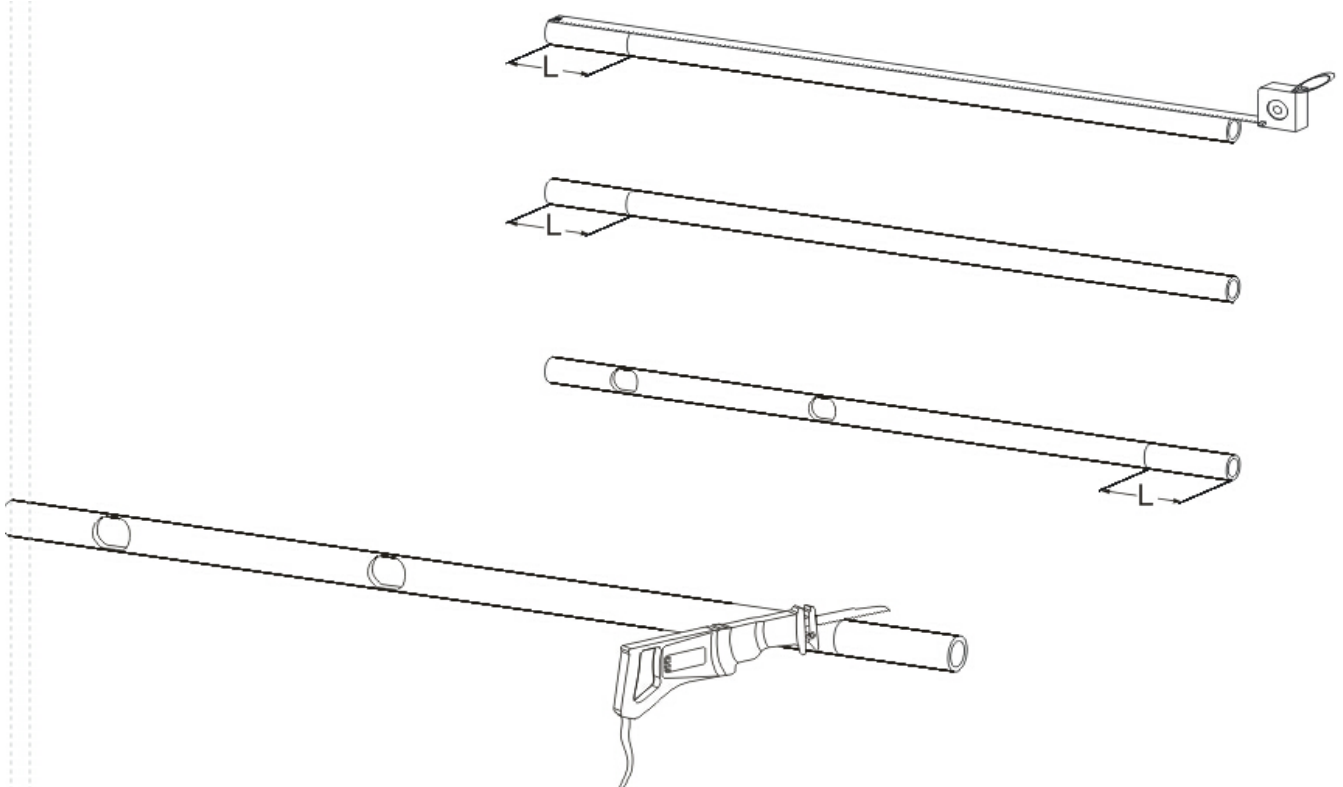


Fig 2

3. Install stationary glass

- 3.1. Install **sealing strip (02)** on the side which will connect to the wall of the **stationary glass (17)**.
- 3.2. Assemble **wall clamp (13)** on the **stationary glass (17)**.
- 3.3. Install **sealing strip (02)** at bottom of **stationary glass (17)**.
- 3.4. Place the stationary glass to the wall, level it and draw holes through the holes on wall clamp(13).

Please see Fig 3 for details

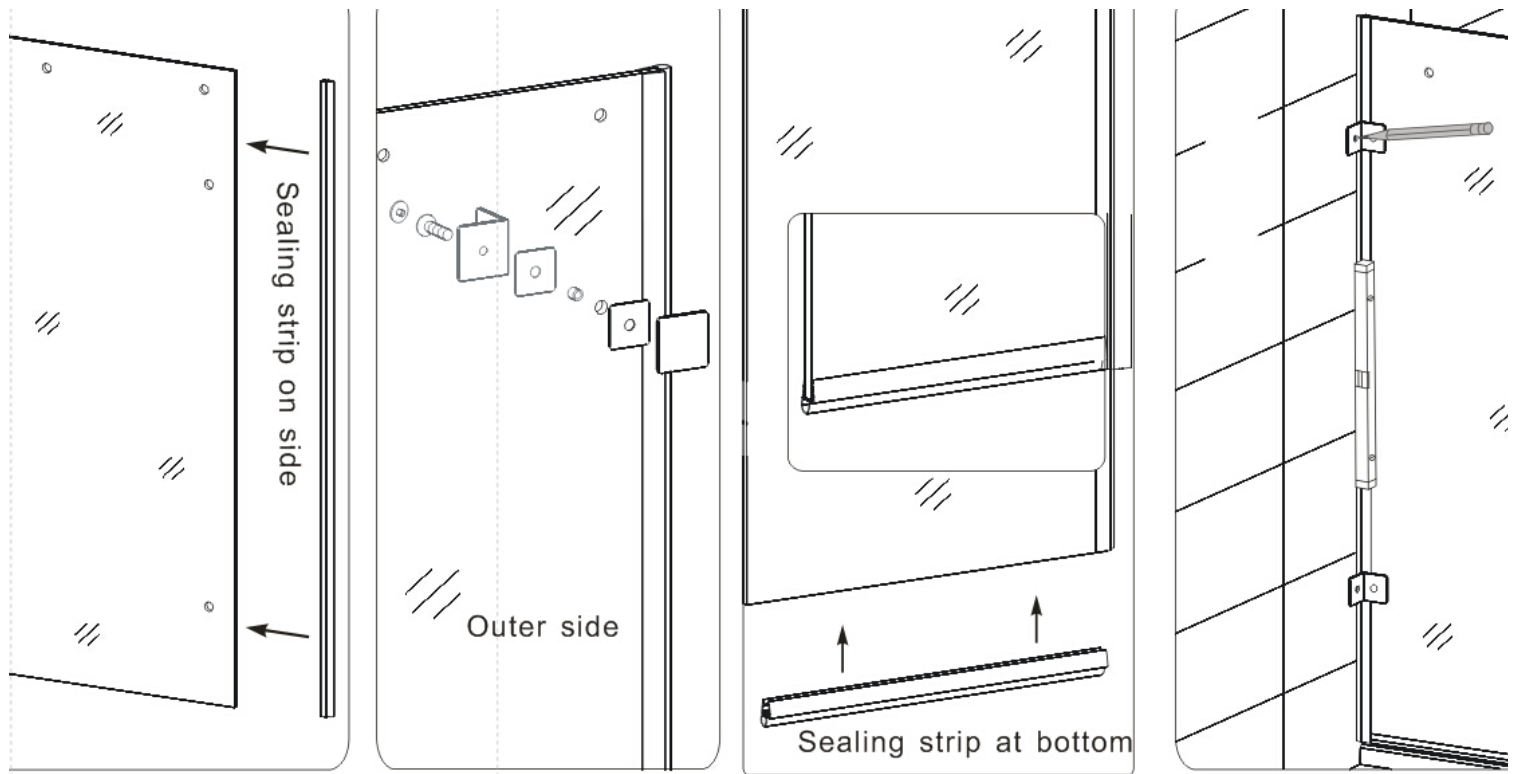


Fig 3

3.5. Use **5/16"** drill bit to drill holes on the wall and knock in the **5/16"** wall anchors (11), then lock the stationary glass to the wall by **Philip's screw ST6*40(07)**.

Please see **Fig 4** for details

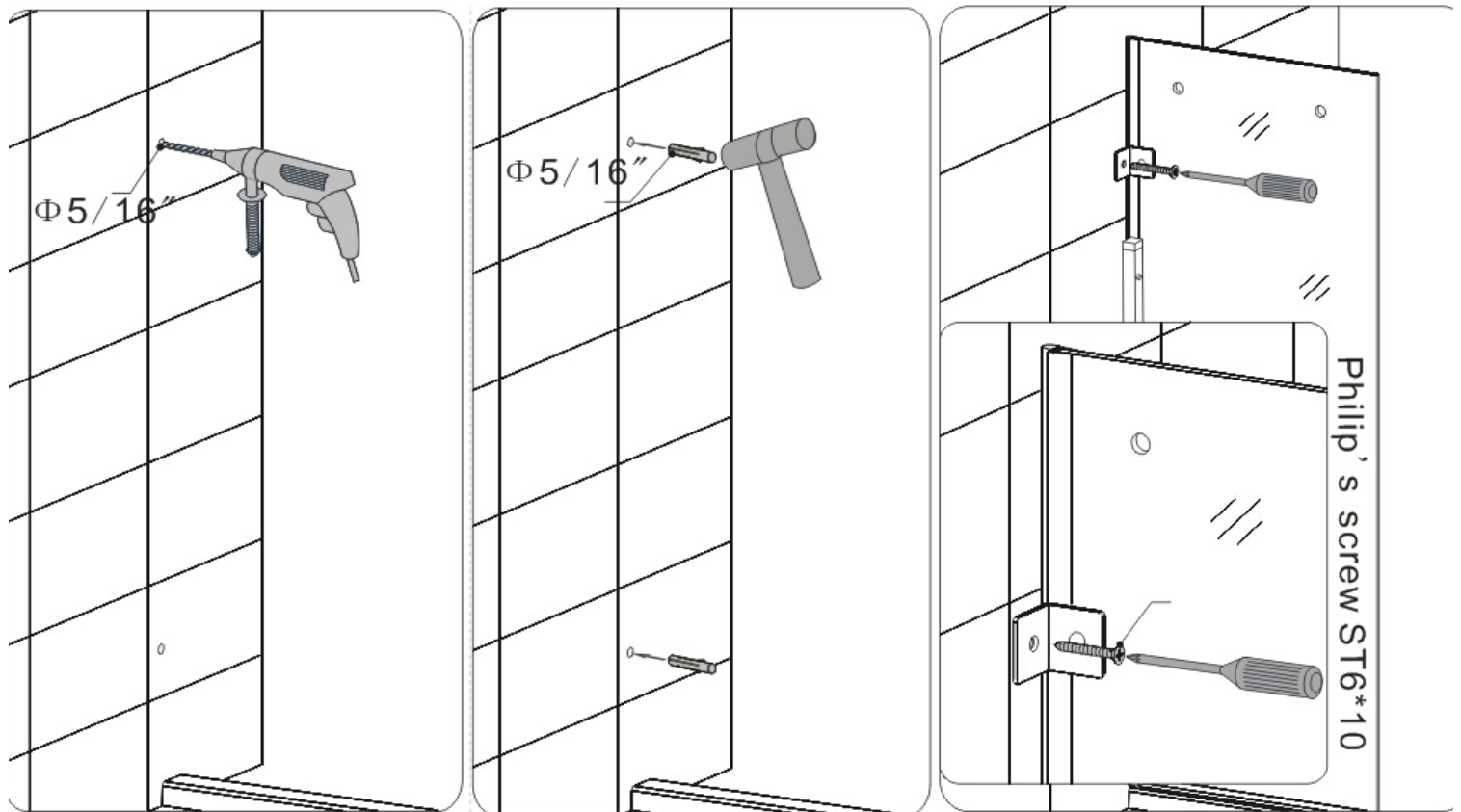


Fig 4

4.Install guide rail

4.1. Loosen the screw on guide rail **bracket (14)**, pull out the wall bracket.
Please see **Fig 5** for details

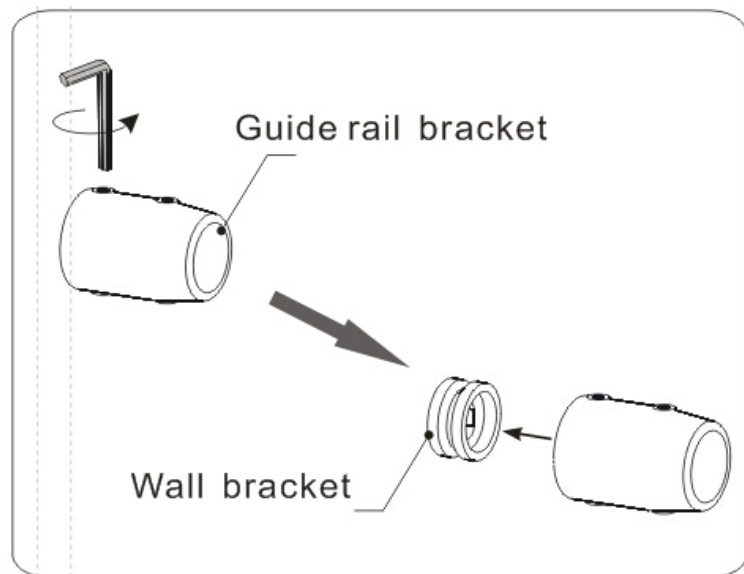


Fig 5

4.2. Place the horizontal position of the wall bracket to the middle between stationary glass and moving glass. Vertical position should be 4 1/7" (105mm) from the top of the stationary glass to the center of the wall bracket. Draw positioning hole on the Wall.

Please see **Fig 6** for details

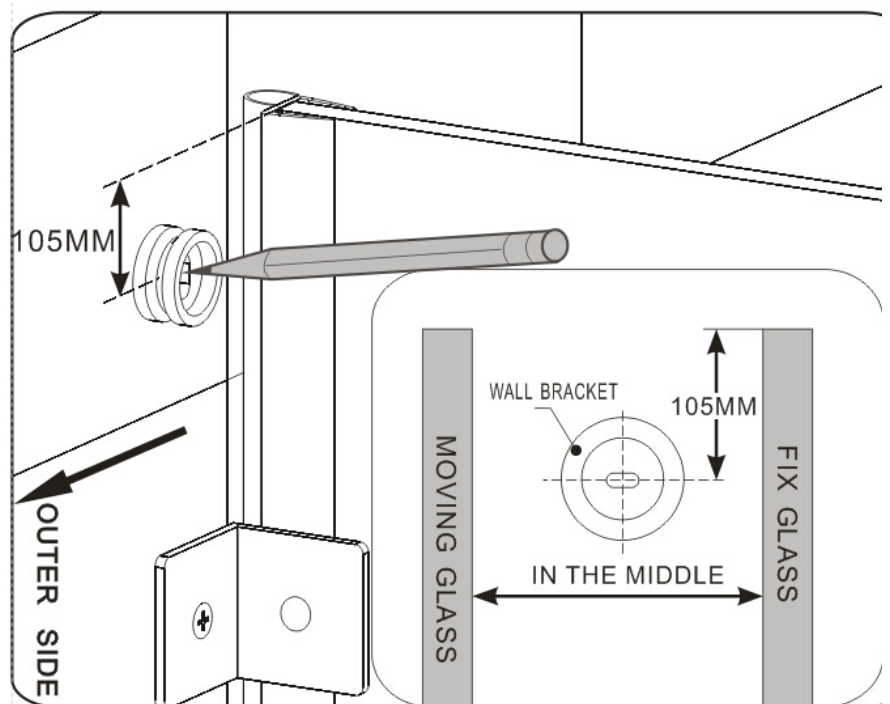


Fig 6

4.3. Drill holes with **1/4"** drill bit and knock in **1/4"** **anchor(10)**, then use **Philip's screw ST5*40(09)** to lock the wall bracket to the wall.

Please see **Fig 7** for details

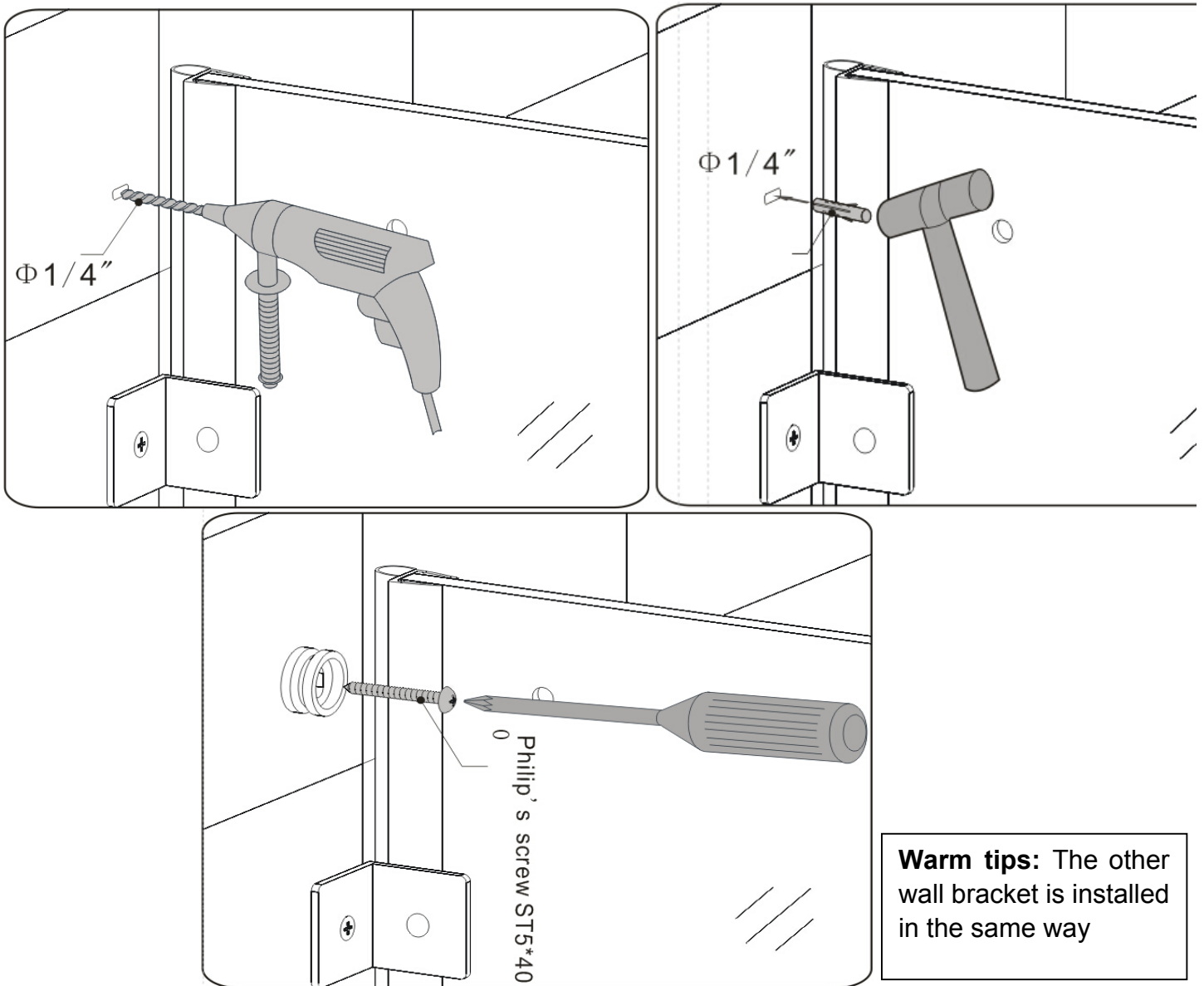
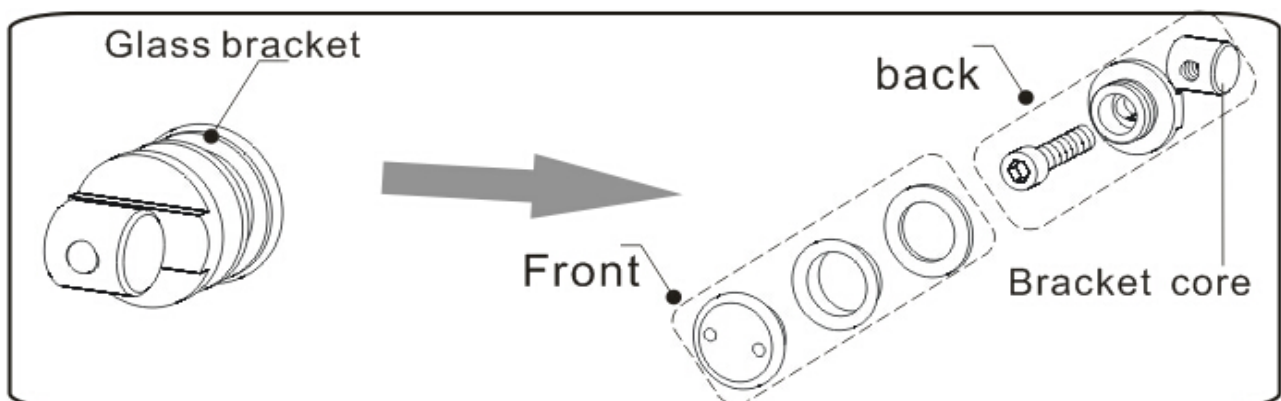


Fig 7

4.3. Disassemble the glass **bracket (06)**. Pull the two door **stoppers (12)** to the guide **rail tube (03)** and insert the bracket core inside the guide rail tube, push it slowly to make the hole on the core match the hole on the tube, then lock the bracket back side with hexagon spanner.



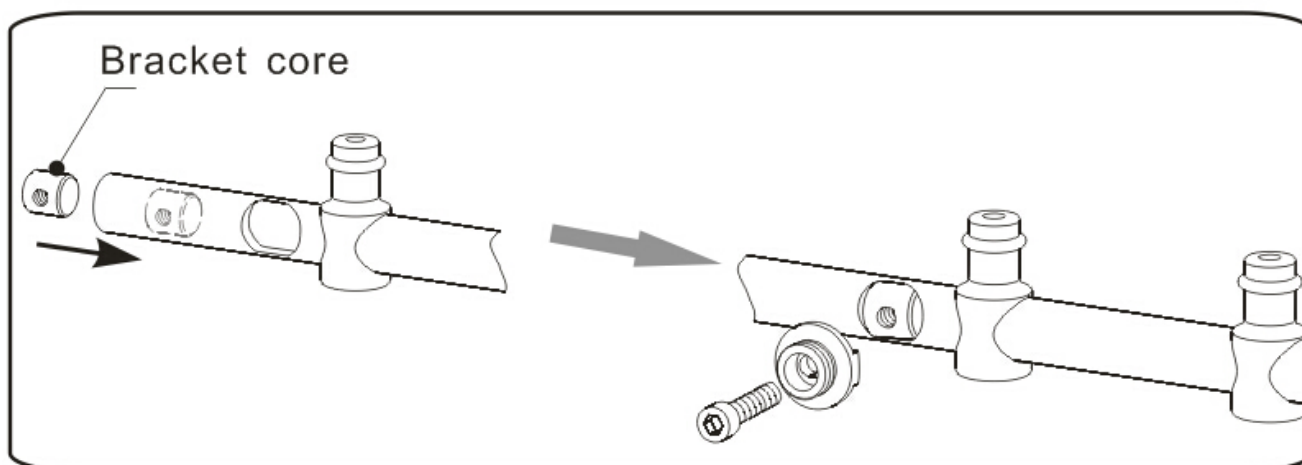


Fig 8

4.4 Insert the **guide rail bracket (14)** to the two sides of the guide rail, fixed the guide rail bracket to the wall bracket with hexagon spanner.

Please see **Fig 9** for details

Warm tips:

1. Please make sure the concave face of the guide rail bracket (14) should face the inner side of the shower space.

2. the other side of the guide rail and guide rail bracket are installed in the same way.

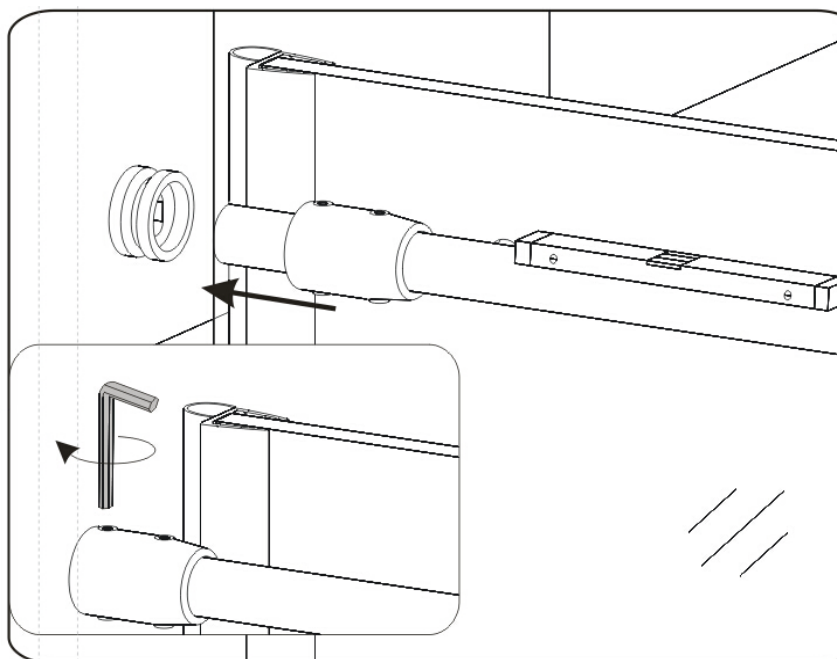


Fig 9

4.5. After finished installing the guide rail, lock the glass bracket front side so as to lock the stationary glass to the guide rail.

Please see Fig 10 for details.

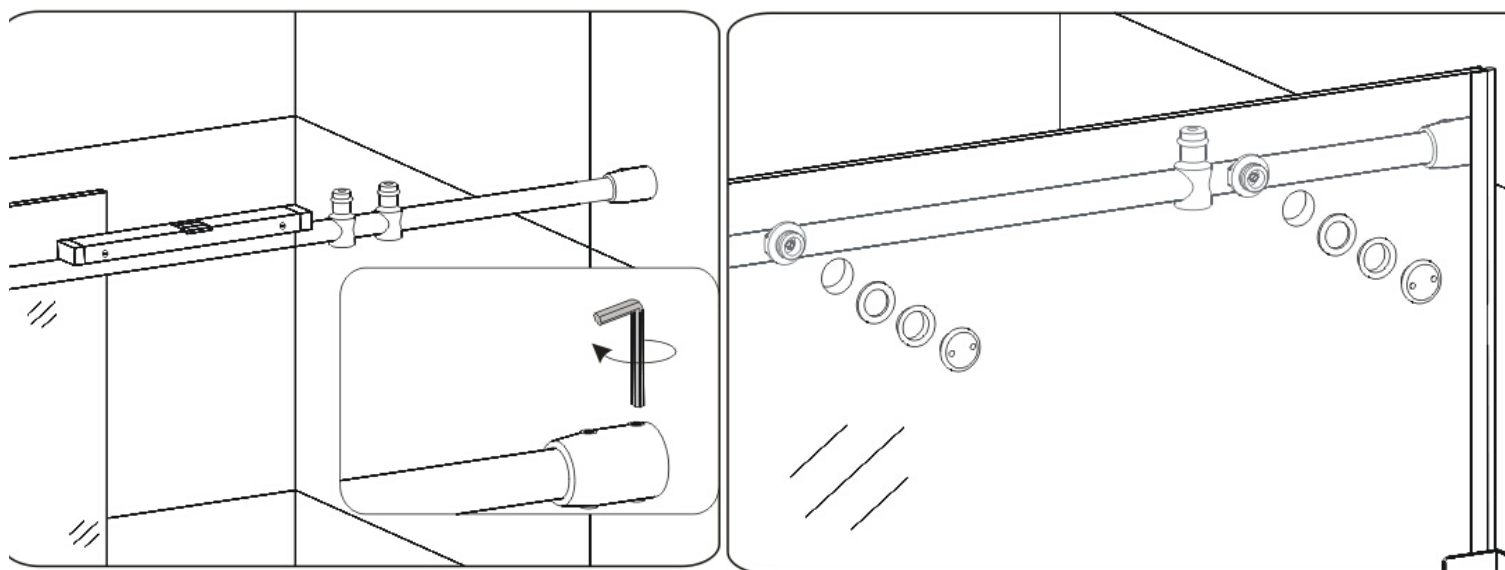


Fig 10

5. Install moving glass

5.1. Install rollers (04)

Please see **Fig 11** for details.

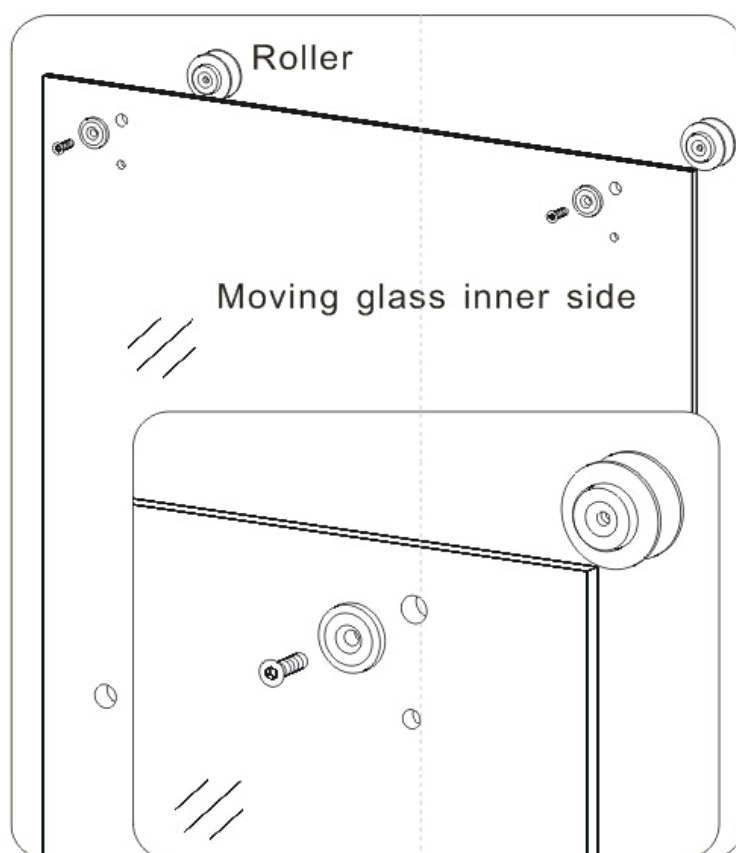


Fig 11

5.2. Install guide block (15) to the shower base.

Please see **Fig 12** for details

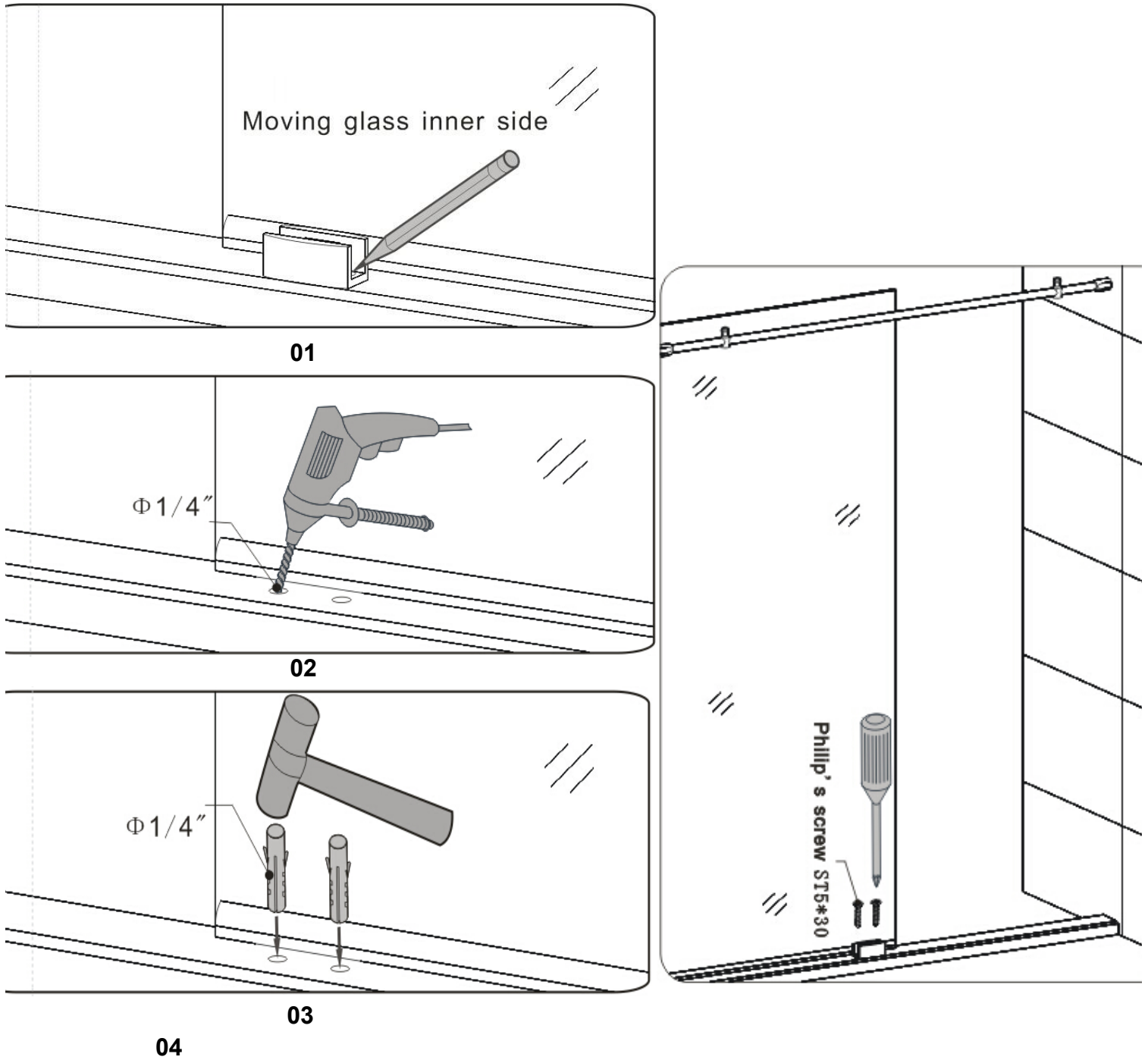


Fig 12

5.3. Rise the moving glass to make rollers hang to the top guide rail and place the glass bottom side to the guide block slowly, adjust glass to vertical then lock the **roller guard(05)**.

Please see Fig 13 for details

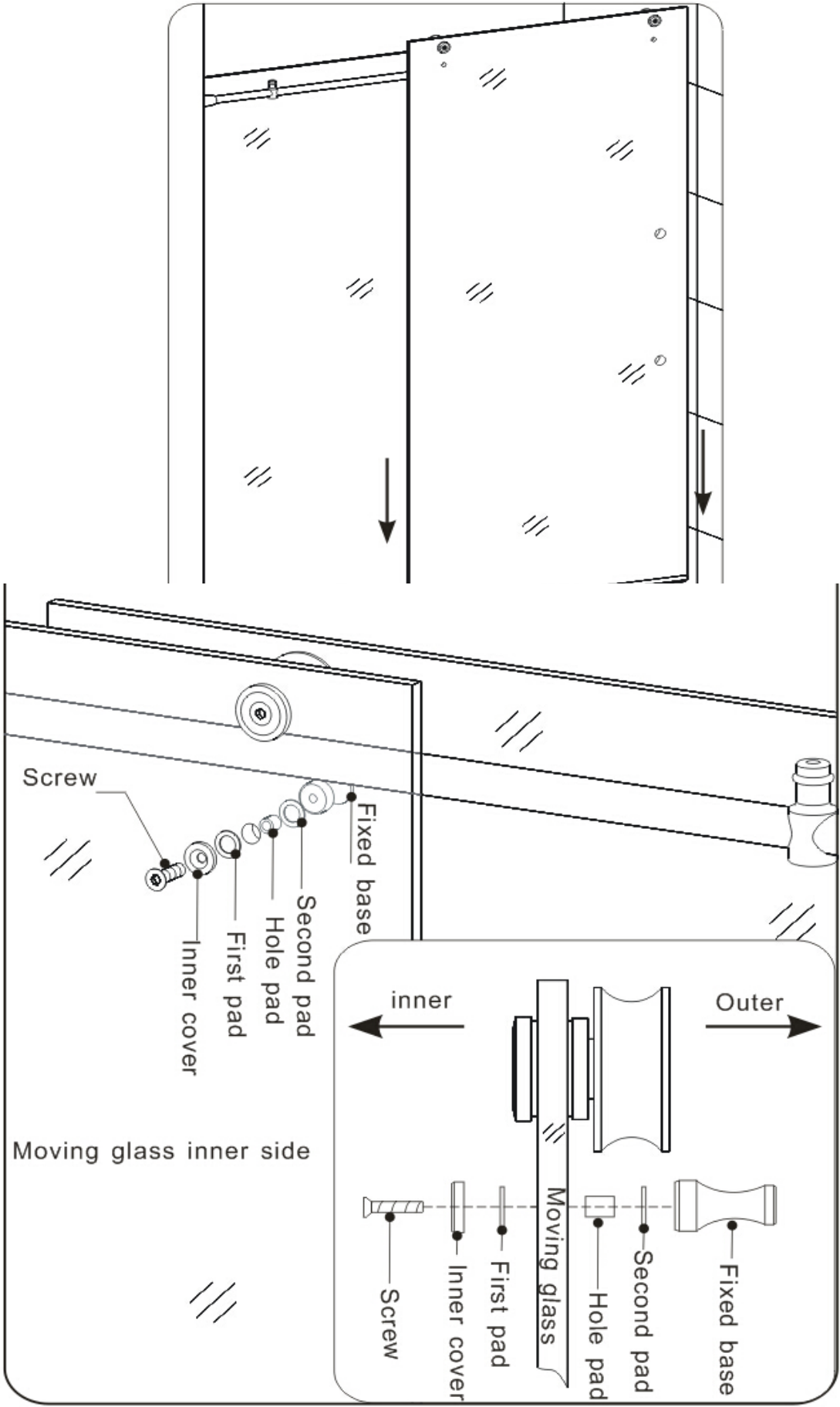


Fig 13

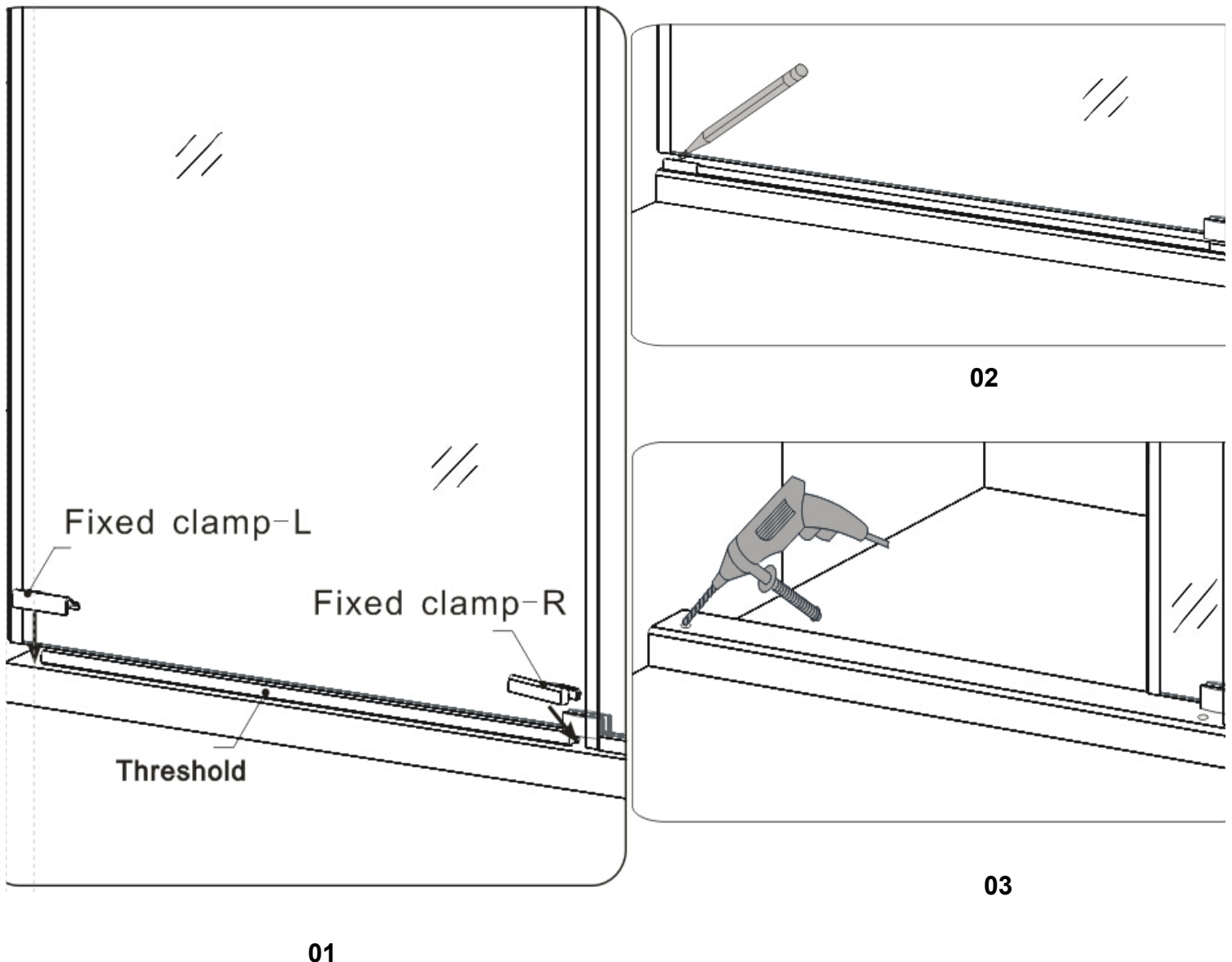
6.Install Threshold(23).

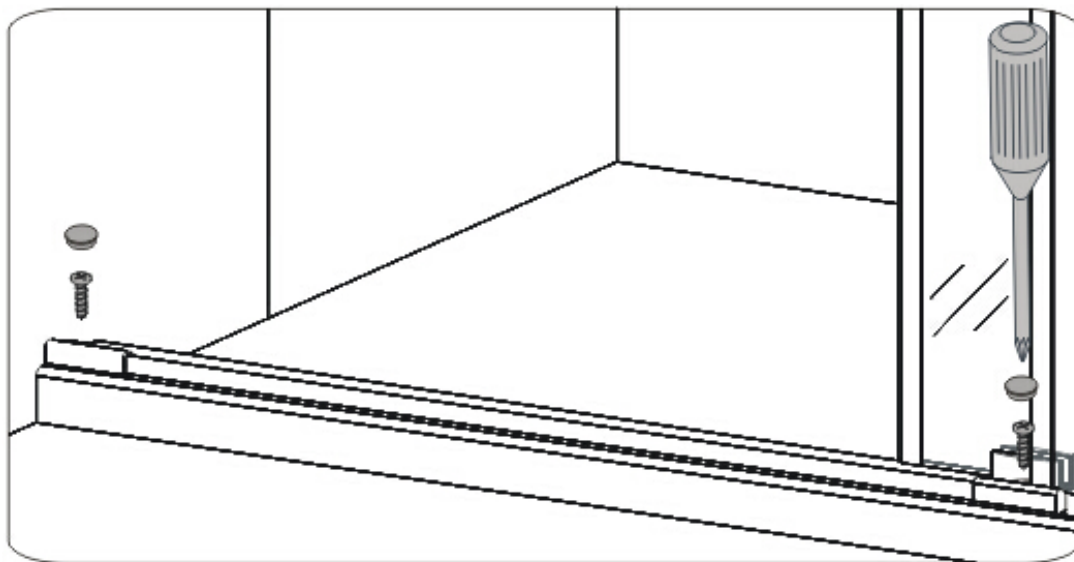
6.1.Place the threshold(23) to the shower base, in same level of the bottom of stationary glass, then place fixed clamp-R(20) to the end of the threshold which close to the stationary glass, make sure the clamp groove to grip the stationary glass. place the fixed clamp-L(21) to the end of the threshold which close to the wall.

6.2 Draw holes on the base through the holes on fixed clamps.

6.3 Use $\Phi 1/4"$ drill bit to drill holes on the base, knock in the $\Phi 1/4"$ anchors and then use philip's screw ST4*16 to lock the fixed clamps and threshold to the tub. finally use screw covers to cover the screw holes.

Please see Fig 14 for details.





04

Fig 14

7. Install **handle (18)**

Please see **Fig 15** for details

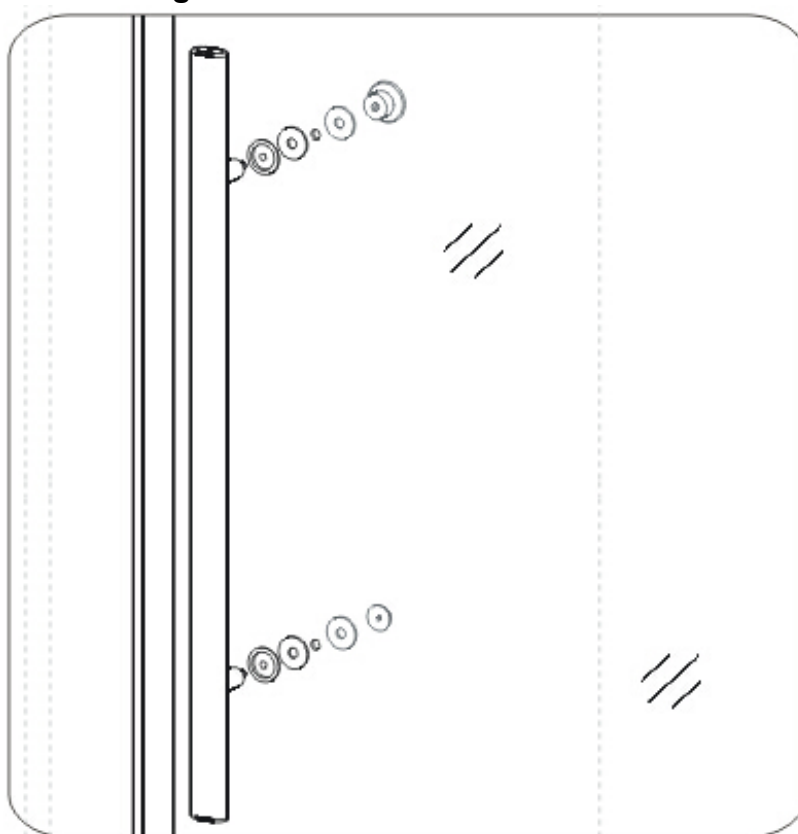


Fig 15

8. Install strips

Please see **Fig 16** for details

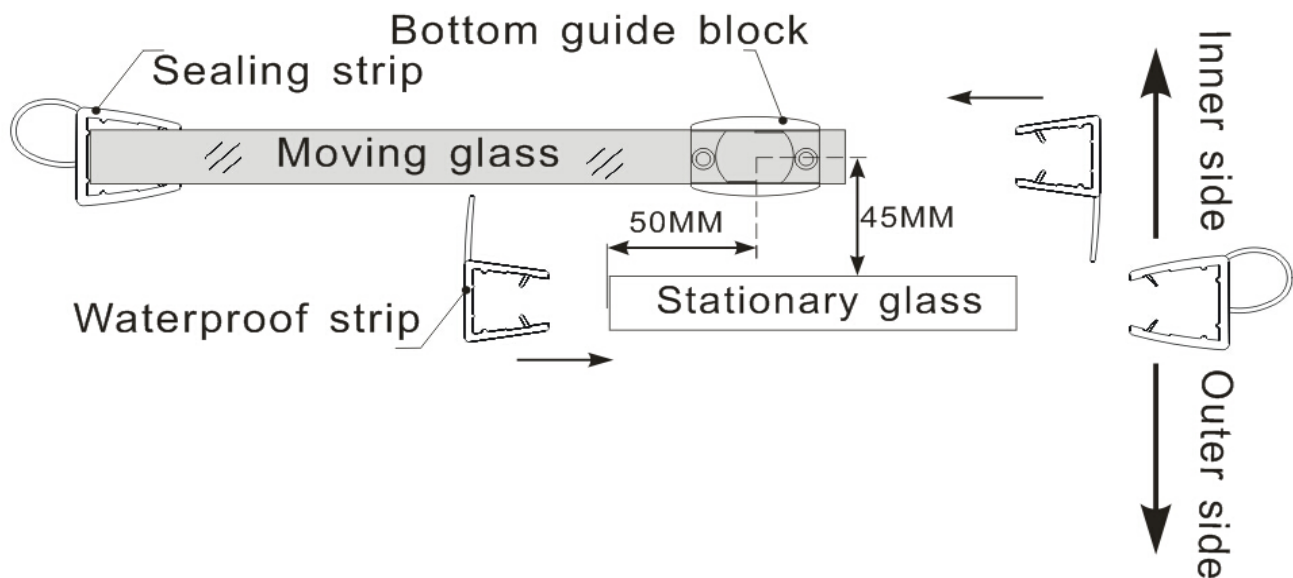
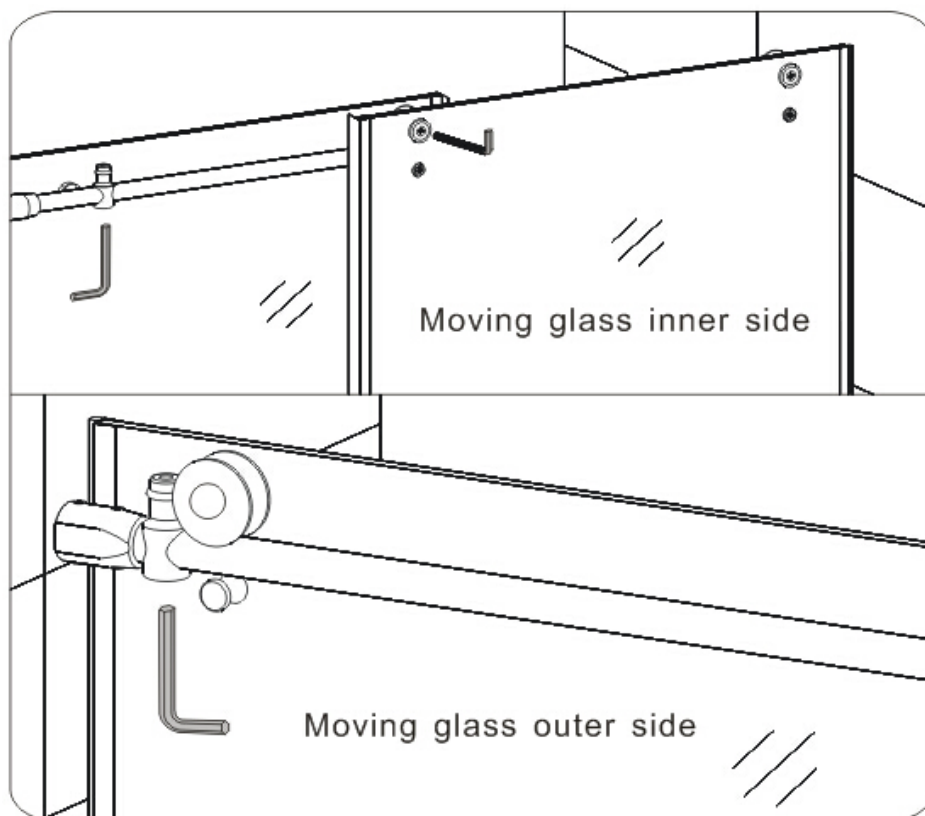


Fig 16

9. Fix the door stopper (12).

Push the **door stopper (12)** close to the wall side, slide the moving door to make roller contact to the stopper and get perfect space then lock the stopper bottom screw.

Please see **Fig 17** for details



Warm tips: The other stopper is installed in the same way.

Fig 17

10. Apply the sealant on the seams between the bottom sealing strip and the shower base, and also the seams between shower base and the ground.

Please see Fig 18 for details

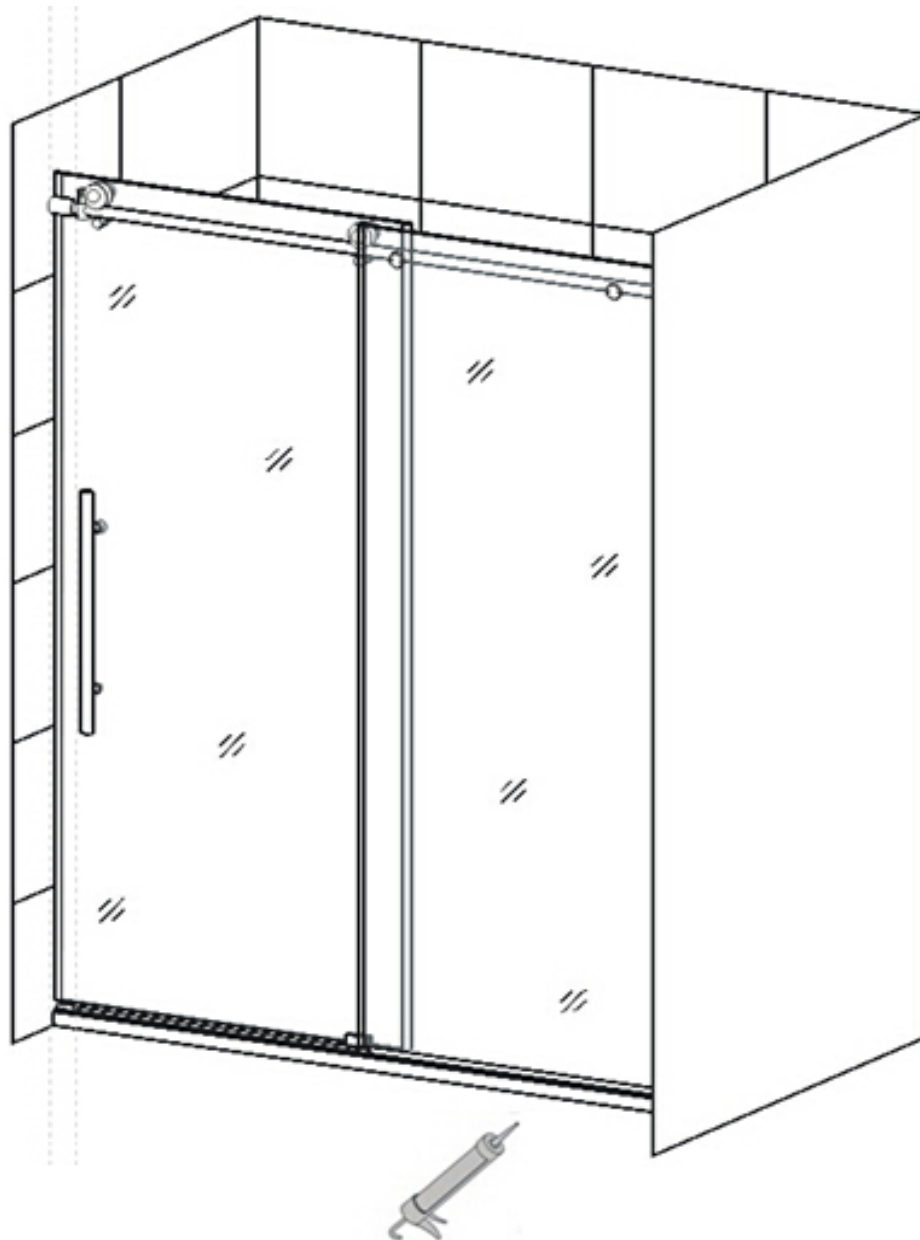


Fig 18

Product Maintenance

To ensure long lasting life for your shower door/bath tub screen, please clean the dust or stains use non-abrasive sprays or cream based cleaners. Never use abrasive cleansers, metal brushes or scrapers that could scratch or dull the surface.

To ensure a long lasting hardware finish, wipe off the metal parts after each use with a soft cloth. Do not use abrasive cleaners or cleaning products containing ammonia, bleach or acid. If accidentally used, rinse the surface as soon as possible to prevent finish peeling or corrosion. After cleaning the shiny finishes, rinse thoroughly and wipe dry with soft cloth. Clean stainless steel surfaces at least once a week. When applying stainless steel cleaner or polish, work with (not against/across) the grain. Never use an abrasive sponge or cloth, steel wool or wired brushes.

Thank you for choosing NERVAL.