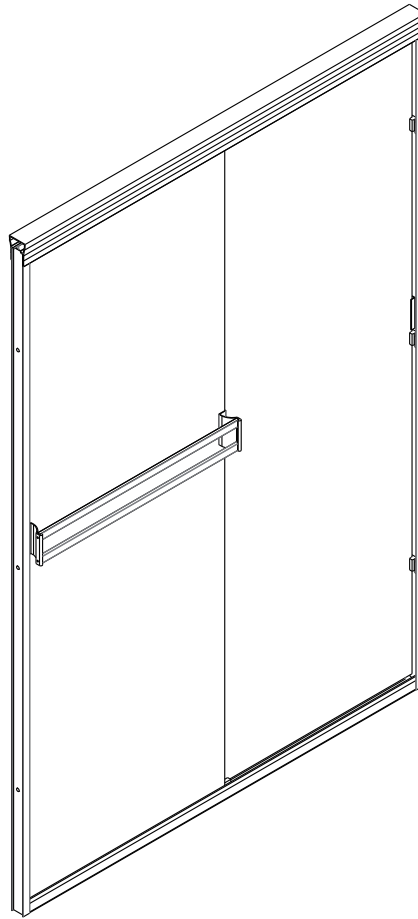


ADRIANA SHOWER DOOR

Installation Instructions



GD-AR4370C/GD-AR4870C **GD-AR5670C/GD-AR5670C**

Size: 41" - 43" x 70" EN (GD-AR4370C)
44" - 48" x 70" EN (GD-AR4870C)
52" - 56" x 70" EN (GD-AR5670C)
56" - 60" x 70" EN (GD-AR6070C)

◆ General Information

Please inspect the product immediately upon receipt for transit damage, missing packs/parts or manufacturing fault. Damage reported later cannot be accepted. Please handle the product with care avoiding knocks and shock loading to all sides and edges of the glass.

Notes: Safety glass can not be re-worked.

Please read these instructions carefully before start of installation.

Special care should be taken when drilling walls to avoid hidden pipes or electrical cables.

Note: This product is heavy and may require two people to install.

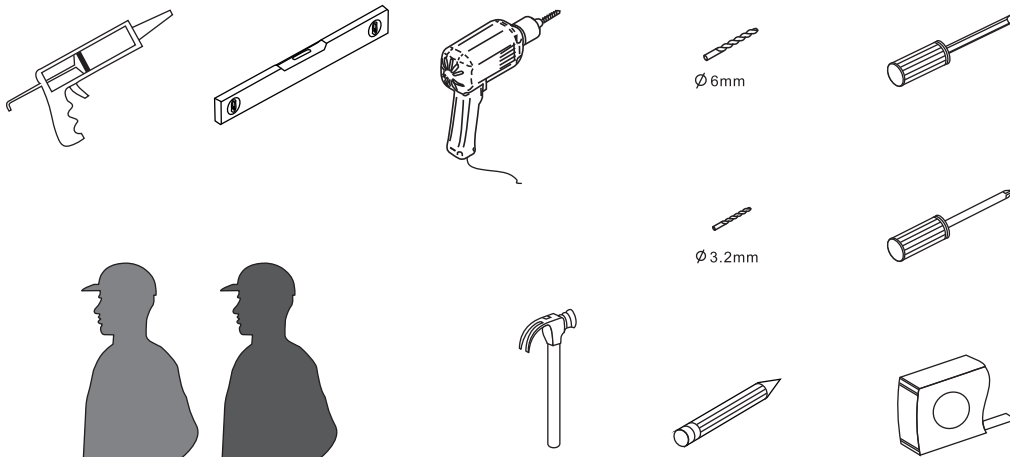
Aftercare instructions

After use, your shower should be cleaned with soap and water. This is particularly important in hard water districts where insoluble lime salts may be deposited and allowed to build up. Cleaners of a gritty or abrasive nature should not be used. Care should be taken to avoid contact with strong chemicals such as organic solvents and strippers.

Glass cleaners can be used but with caution, if in doubt contact the manufacturer of the cleaner in question.

Please keep these instructions for aftercare and customer service details.


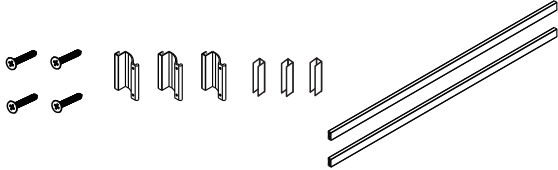


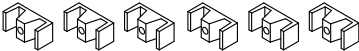
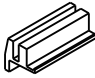
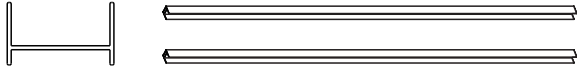


Tools Required



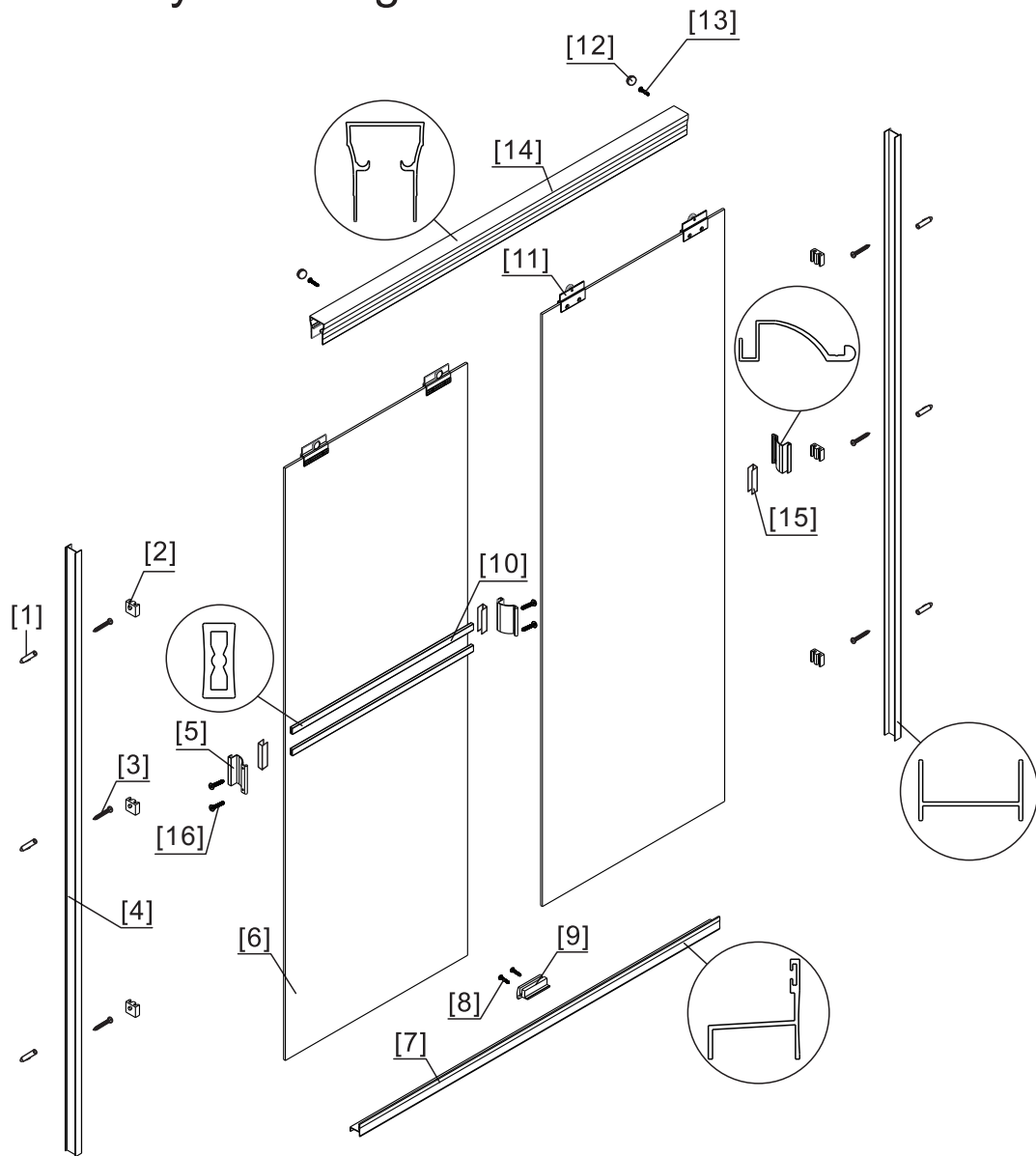
This product is heavy and may require two people to install.



◆ Box Contents:

<p>[1] 1xInstallation Instruction.</p>	<p>➔</p>	
<p>[2] 3xHandle Bases. 3xWater Deflectors. 2xHandle Bars. 4xCountersunk Head Screws.</p>	<p>➔</p>	
<p>[3] 6xWall Plugs. 6xScrews M4x30.</p>	<p>➔</p>	
<p>[4] 2xScrews M4x12. 2xScrews M4x8. 2xScrew Cover Caps.</p>	<p>➔</p>	
<p>[5] 6xGlass Blocks.</p>	<p>➔</p>	
<p>[6] 1xGlass Track.</p>	<p>➔</p>	
<p>[7] 2xWall Posts.</p>	<p>➔</p>	
<p>[8] 1xTop Horizontal Rail. 1xBottom Horizontal Rail.</p>	<p>➔</p>	
<p>[9] 2xDoor Panels. 4xWheels.</p>	<p>➔</p>	

◆ Assembly Drawing



[1] 6xWall Plugs

[2] 6xGlass Blocks

[3] 6xScrews M4x30

[4] 2xWall Posts

[5] 3xHandle Bases

[6] 2xDoor Panels

[7] 1xBottom Horizontal Rail

[8] 2xScrews M4x12

[9] 1xGlass Track

[10] 2xHandle Bars

[11] 4xWheels

[12] 2xScrew Cover Caps

[13] 2xScrews M4x8

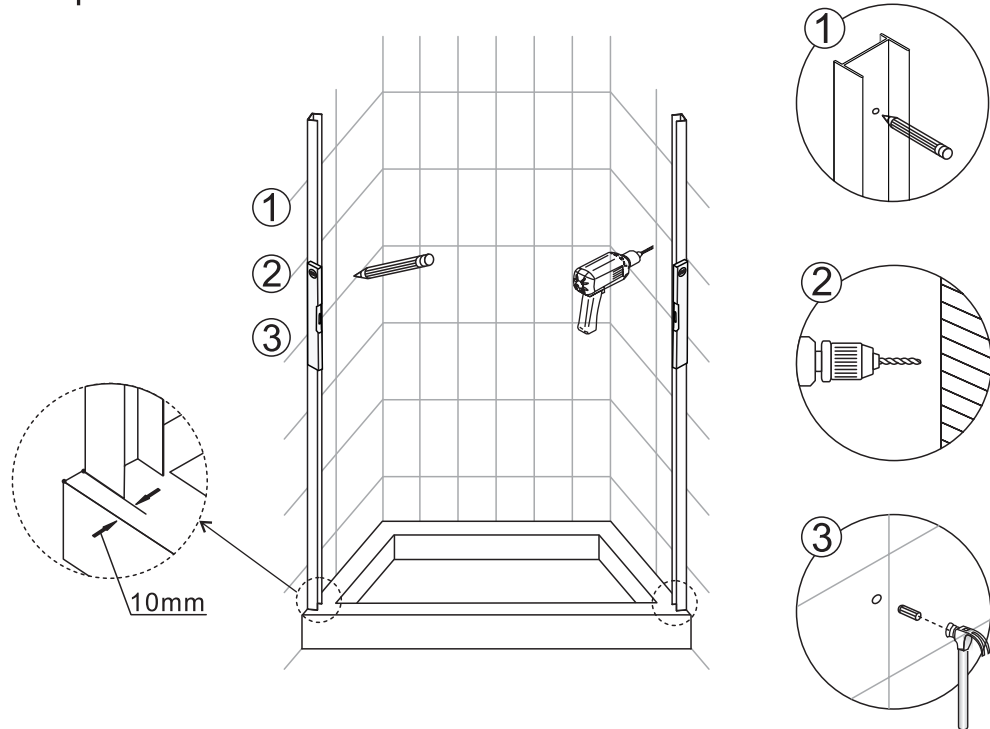
[14] 1xTop Horizontal Rail

[15] 3xWater Deflectors

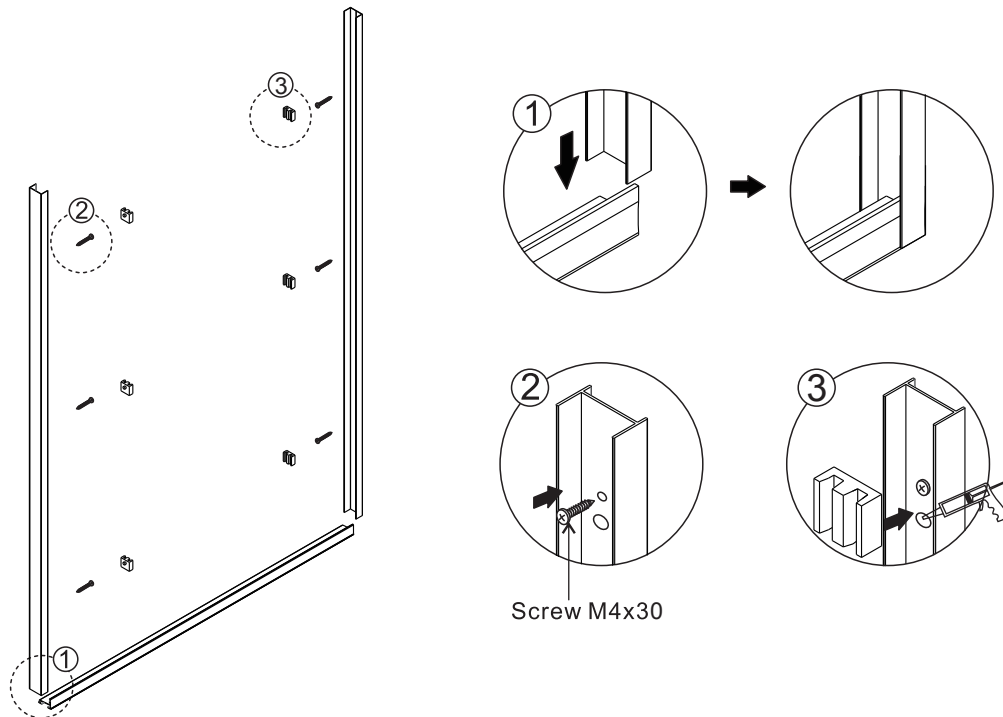
[16] 4xCountersunk Head Screws M4x12

◆ Installation Steps:

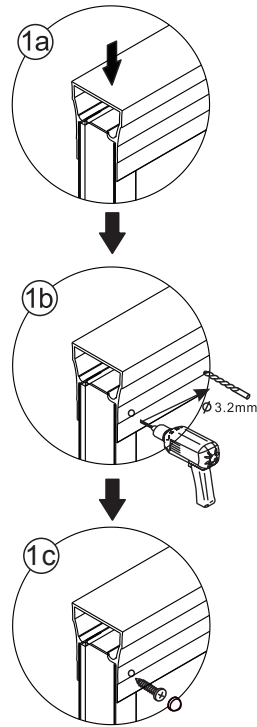
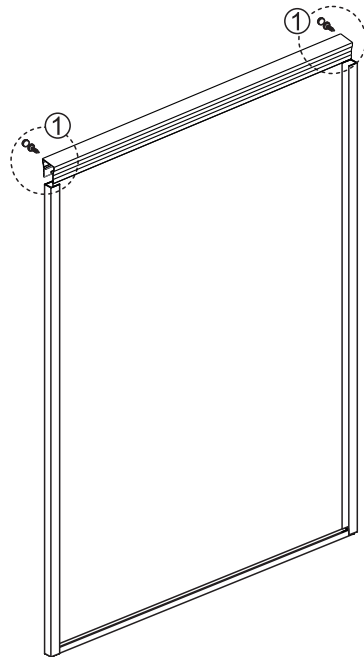
Step 1



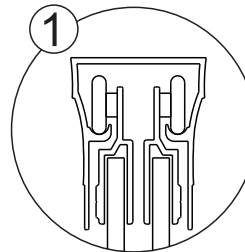
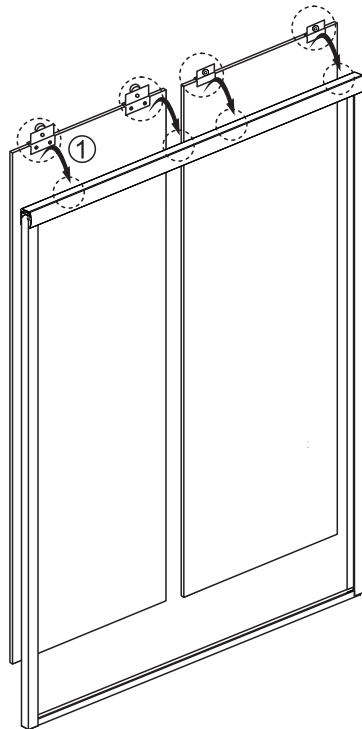
Step 2



Step 3

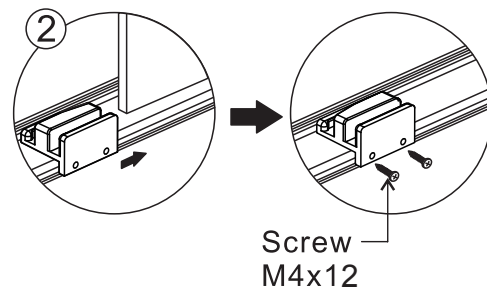
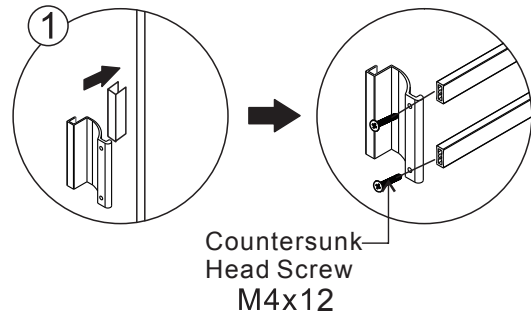
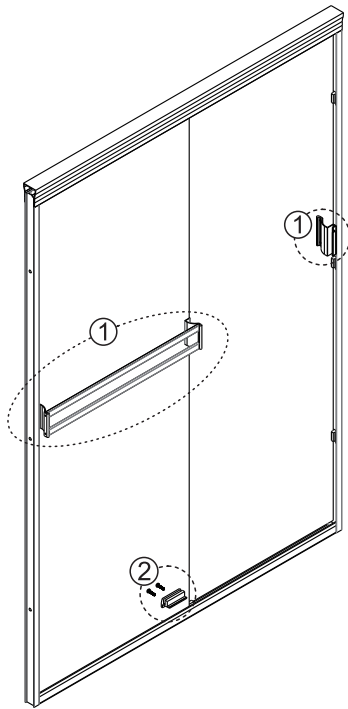


Step 4

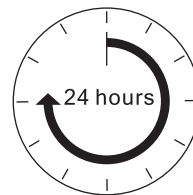
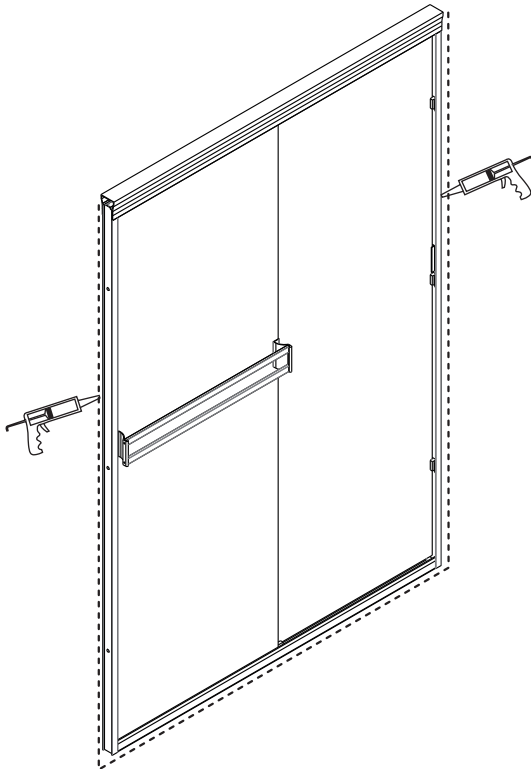


Ensure wall profiles are plumb. Adjust enclosure to be square and level. Wall post and profile should be adjust to square the doors and Ensure open door smooth.

Step 5



Step 6



Allow 24 hours for silicone to dry before use.

QUALITY AND SERVICE YOU CAN COUNT ON SINCE 1985

For over 33 years, Nerval Corporation has been importing, wholesaling and manufacturing a wide variety of products. Wholesale only, we sell to retail stores, hotels, contractors and builders. If you require high quality products at truly affordable prices, contact us

Tel: 780 452 1111 | Email: info@nervalcorp.com | www.nervalcorp.com

NERVAL is a registered trade mark of NERVAL Corporation

Copyright © 2018